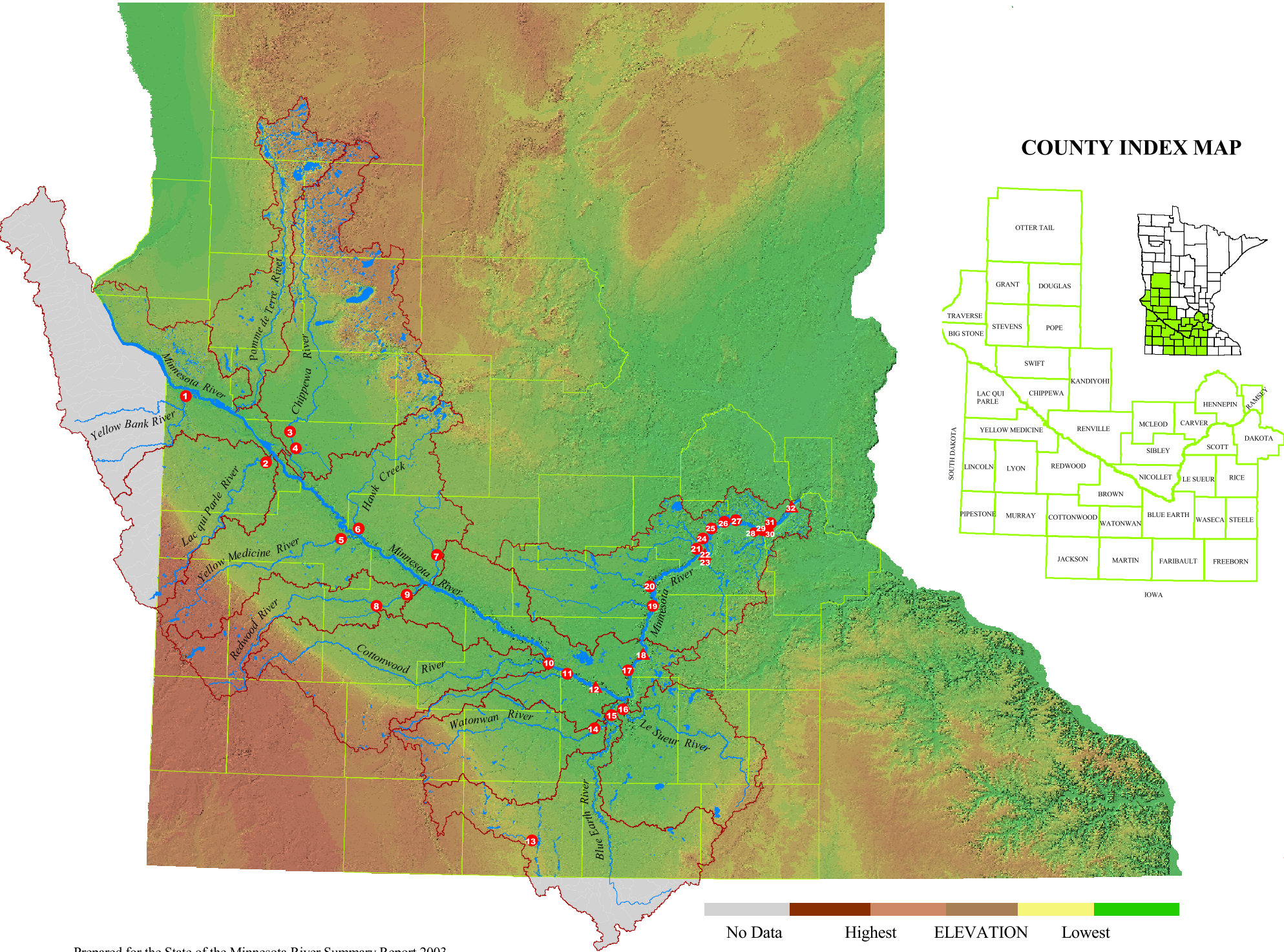


SELECT MINNESOTA RIVER BASIN MONITORING SITES
SITE LOCATION AND DESCRIPTION FOR THE YEAR 2003



MONITORING SITES

1	Yellow Bank River near Odessa	LQPYB
2	Lac qui Parle River near Lac qui Parle	LQPYB-USGS
3	Chippewa River near Milan	CRWP-USGS
4	Dry Weather Creek near Watson	CRWP
5	Yellow Medicine River near Granite Falls	YMRW-USGS
6	Hawk Creek at Co Rd 52	HCWP
7	West Fork Beaver Creek Henryville Twp	HCWP
8	Clear Creek near Seaforth	RCRCA
9	Redwood River near Redwood Falls	RCRCA-USGS
10	Cottonwood River near New Ulm	RCRCA-USGS
11	Little Cottonwood River near Courtland	BNC-USGS
12	Minnesota River at Judson	MCES-MDA
13	Dutch Creek near Fairmont	MARTIN CO
14	Watonwan River near Garden City	WAT.CO-MPCA-USGS
15	Blue Earth River at Dam in Rapidan Twp	MCES-MDA-USGS
16	Le Sueur River at Hwy 66 in South Bend Twp	MCES-MDA
17	Seven Mile Creek near St. Peter	BNC
18	Minnesota River at St. Peter	MCES
19	Rush River at Hwy 93 near Henderson	SIBLEY
20	High Island Creek near Henderson	SIBLEY-USGS
21	Bevens Creek at Co Rd 40 Bridge	MCES
22	Minnesota River near Jordan	MCES-USGS
23	Sand Creek at 2nd St in Jordan	MCES
24	Carver Creek at Co Rd 40	MCES
25	Chaska Creek at Co Rd 10	MDA
26	Bluff Creek at Flying Cloud Drive	MCES
27	Riley Creek at Hwy 169 in Eden Prairie	MCES
28	Eagle Creek 50m up from 126th Street	MCES
29	Credit River at 123rd St Bridge in Savage	MCES
30	Willow Creek 300m down from Hwy 13	MCES
31	Nine Mile Creek 500m down from 106th St	MCES
32	Minnesota River at Fort Snelling State Park	MCES-USGS

MAP KEY

- 1

Tributary Monitoring Site
- 12

Minnesota River Monitoring Site
- Major Watershed Boundary
- County Boundary
- Minnesota River
- Tributary Stream
- Lake

Prepared for the State of the Minnesota River Summary Report 2003
Author: Cecilia Berg
Minnesota River Basin Data Center
ARCINFO 7.1.2 and ArcView 3.3
April 2005

Data Sources: Minnesota River Basin Data Center political boundaries, hydrography, site locations; USGS monitoring site locations, watersheds; Watershed Organizations monitoring site locations, watersheds; MDNR shaded relief map.

Contributors: Barr Engineering; Brown-Nicollet-Cottonwood Water Board (BNC); Chippewa River Watershed Project (CRWP); Hawk Creek Watershed Project (HCWP); High Island Creek Watershed Assessment Project (HCWAP); Lac qui Parle-Yellow Bank Watershed Project; Martin SWCD; Metropolitan Council Environmental Services Program (MCES); Minnesota Department of Agriculture Surface Water Monitoring Program (MDA); Minnesota Pollution Control Agency (MPCA); Minnesota State University Mankato, Water Resources Center (MSUWRC); Redwood-Cottonwood Rivers Control Area (RCRCA); Rush River Assessment Project (RRAP); U.S. Geological Survey (USGS); Watonwan River Watershed Clean Water Partnership (WRWCWP); Yellow Medicine River Watershed (YMRW).

