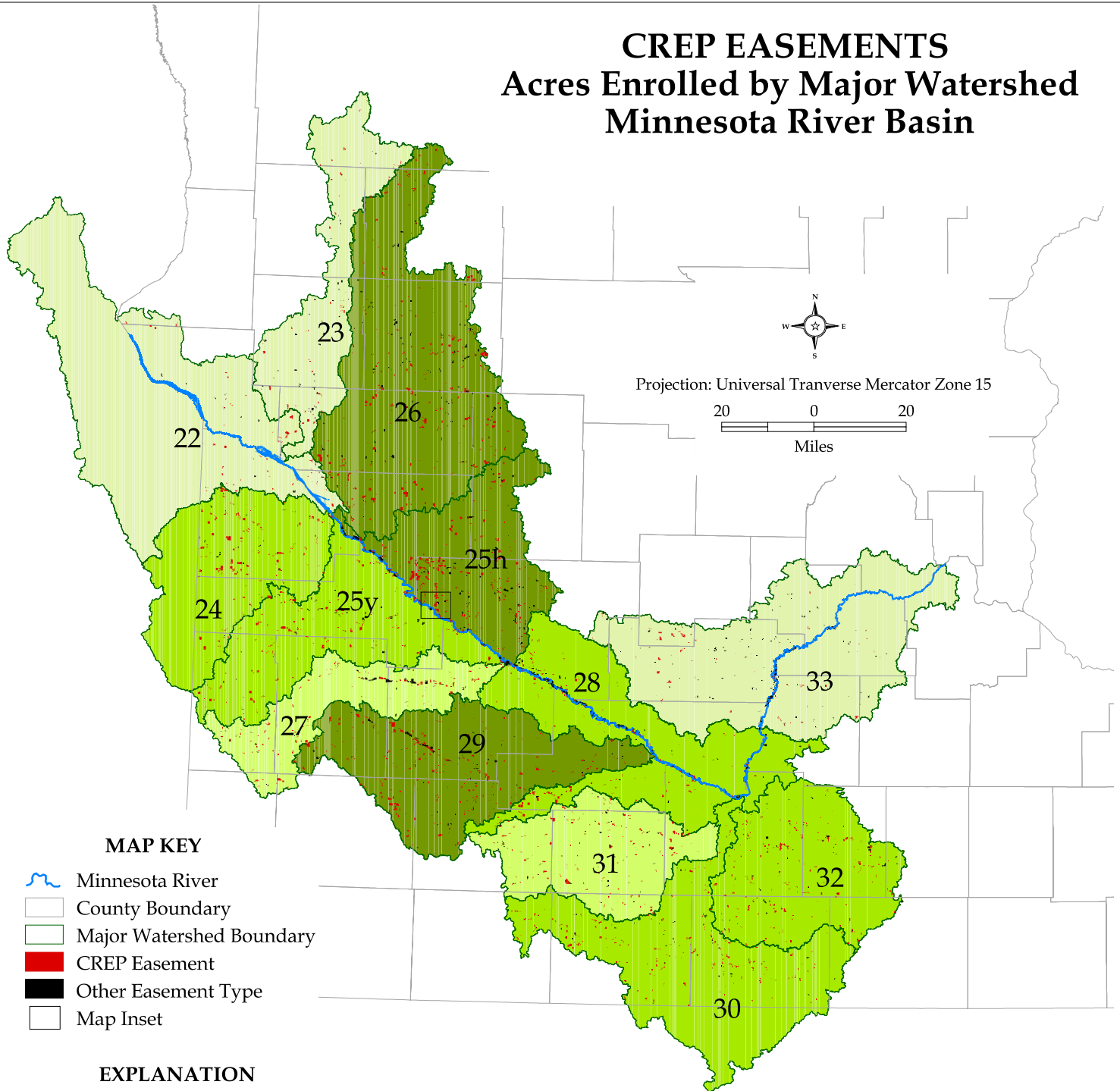


# CREP EASEMENTS Acres Enrolled by Major Watershed Minnesota River Basin



## MAP KEY

- Minnesota River
- County Boundary
- Major Watershed Boundary
- CREP Easement
- Other Easement Type
- Map Inset

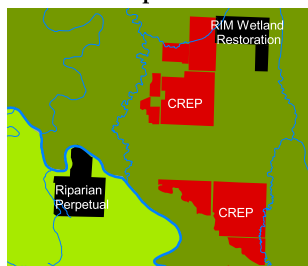
## EXPLANATION

The map displays CREP and other easement locations relative to major watershed areas in the Minnesota River Basin. The data analysis classifies each watershed by acres of CREP enrollments in place by May 2004 and does not include final CREP enrollment acres. Total conservation easements include CREP, RIM, PWP, and other easement such as riparian and marginal cropland but may not include other easement data available in programs such as CRP. The acres and percent of CREP and total easements are based on the Minnesota portion of the Minnesota River Basin.

### Major Watershed Classified by CREP Enrollment Acres

	2,427 - 2,694 acres
	4,675 - 5,710 acres
	6,507 - 8,051 acres
	11,404 - 16,570 acres

### Map Inset



### CREP and Total Easements by Major Watershed Easement Acres and Percent of Major Watershed

Major Watershed ID	Major Watershed Name	CREP		Total Easements	
		Acres	%	Acres	%
30	Blue Earth	6,507	0.8	7,715	1.0
26	Chippewa	16,570	1.2	20,859	1.6
29	Cottonwood	11,404	1.4	14,123	1.7
25h	Hawk Creek	12,715	2.0	17,368	2.8
24	Lac qui Parle	8,051	1.7	8,652	1.8
32	Le Sueur	6,936	1.0	8,512	1.2
33	Lower Minnesota	2,653	0.2	6,674	0.6
28	Middle Minnesota	6,727	0.8	12,398	1.4
23	Pomme de Terre	2,427	0.4	3,977	0.7
27	Redwood	4,675	1.0	7,307	1.6
22	Upper Minnesota	2,694	0.6	3,296	0.7
31	Watwan	5,710	1.0	7,131	1.3
25y	Yellow Medicine	7,971	1.1	10,785	1.5
Total Acres		95,039	1.0	128,797	1.3

Author: Cis Berg  
Water Resources Center  
Minnesota State University Mankato  
May 31, 2005  
ARCINFO 8.2 and ArcView 3.3

Data Sources: BWSR Rimactive file 05-10-04;  
Minnesota River Basin Data Center GIS files.  
Data analysis of rimactive file is approximate  
due to overlapping polygons in source data.