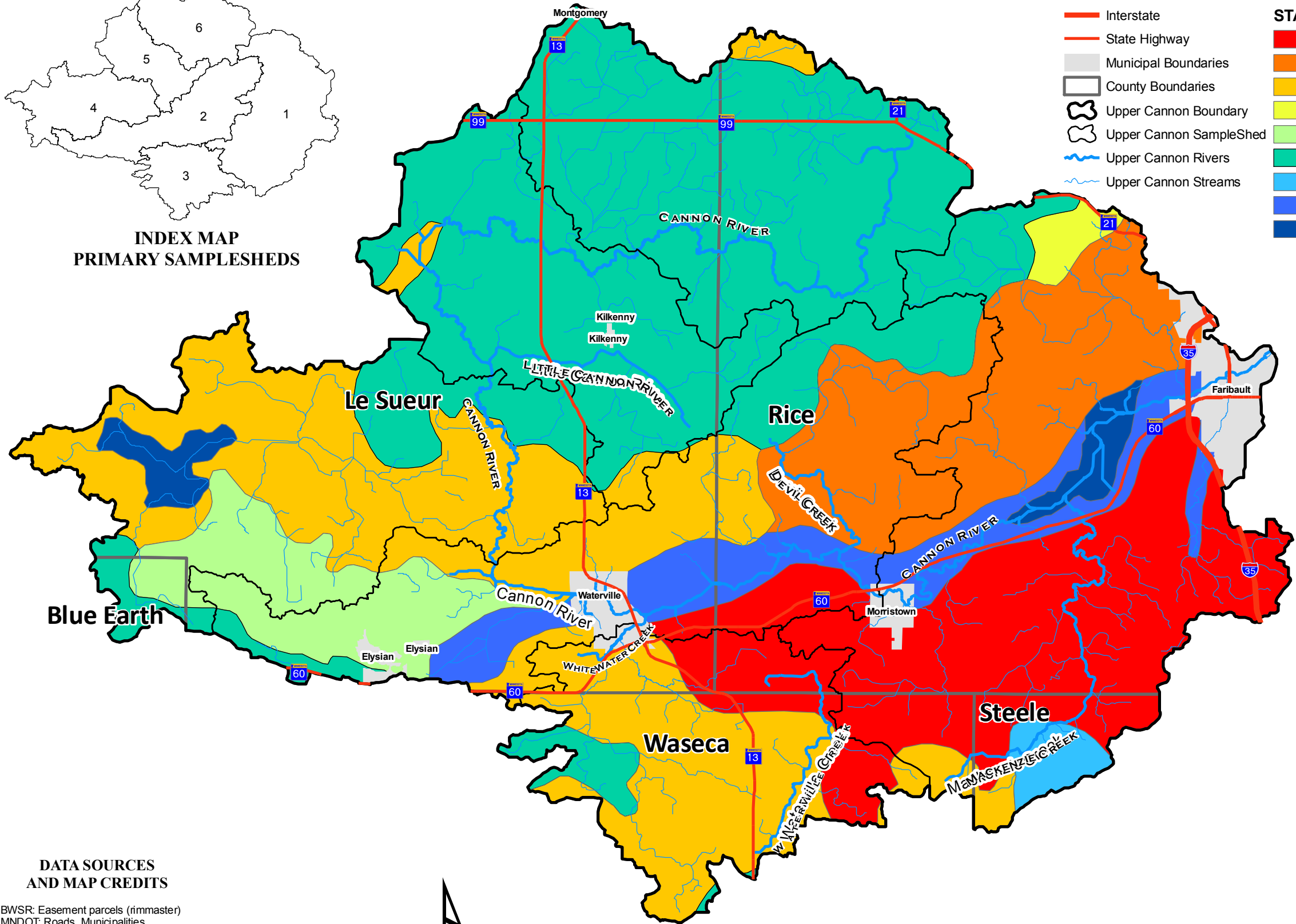


**INDEX MAP
PRIMARY SAMPLESHEDS**



MAP KEY

- Interstate
- State Highway
- Municipal Boundaries
- County Boundaries
- Upper Cannon Boundary
- Upper Cannon SampleShed
- Upper Cannon Rivers
- Upper Cannon Streams

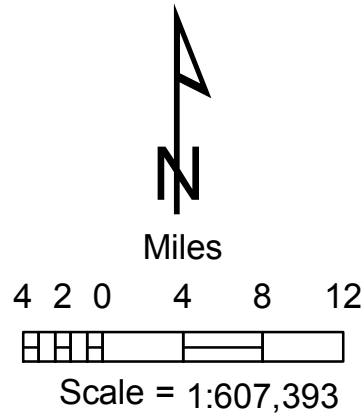
STATSGO Soil Associations

- Webster-Nicollet-Clarion-Canisteo (s1750)
- Webster-Nicollet-Lester (s1752)
- Lester-Le Sueur-Cordova (s3503)
- Muskego-Lester-Hayden (s3505)
- Storden-Estherville-Clarion (s3582)
- Kilkenny-Caron (s3584)
- Lerdal-Lilkenny-Hamel (s3617)
- Waukegan-Estherville-Dickinson-Colo (s3650)
- Water (s8369)

**DATA SOURCES
AND MAP CREDITS**

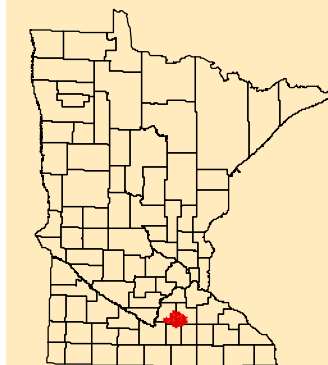
BWSR: Easement parcels (rimmaster)
 MNDOT: Roads, Municipalities
 MNDNR: State Park Statutory Boundaries
 National Land Cover Dataset
 National Wetlands Inventory (NWI)
 MRBDC: (Minnesota River Basin Data Center)
 Watershed boundaries, Streams, Lakes
 UCAP: (Upper Cannon Assessment Project)
 Monitoring sites and sub watersheds
 USFW: Wetland Reserve Program (WRP)
 Wildlife Management Area (WMA)

UPPER CANNON WATERSHED ASSESSMENT PROJECT
 Data and maps compiled by:
 Rick Moore
 Water Resources Center
 Minnesota State University, Mankato
 Date: June 13, 2008
 Software: ArcGIS 9.2



SOIL CLASSIFICATIONS

**UPPER CANNON
WATERSHED**



LOCATION MAP

*Upper Cannon Assessment Project
 Clean Water Partnership
 Minnesota Pollution
 Control Agency
 2007-2009*