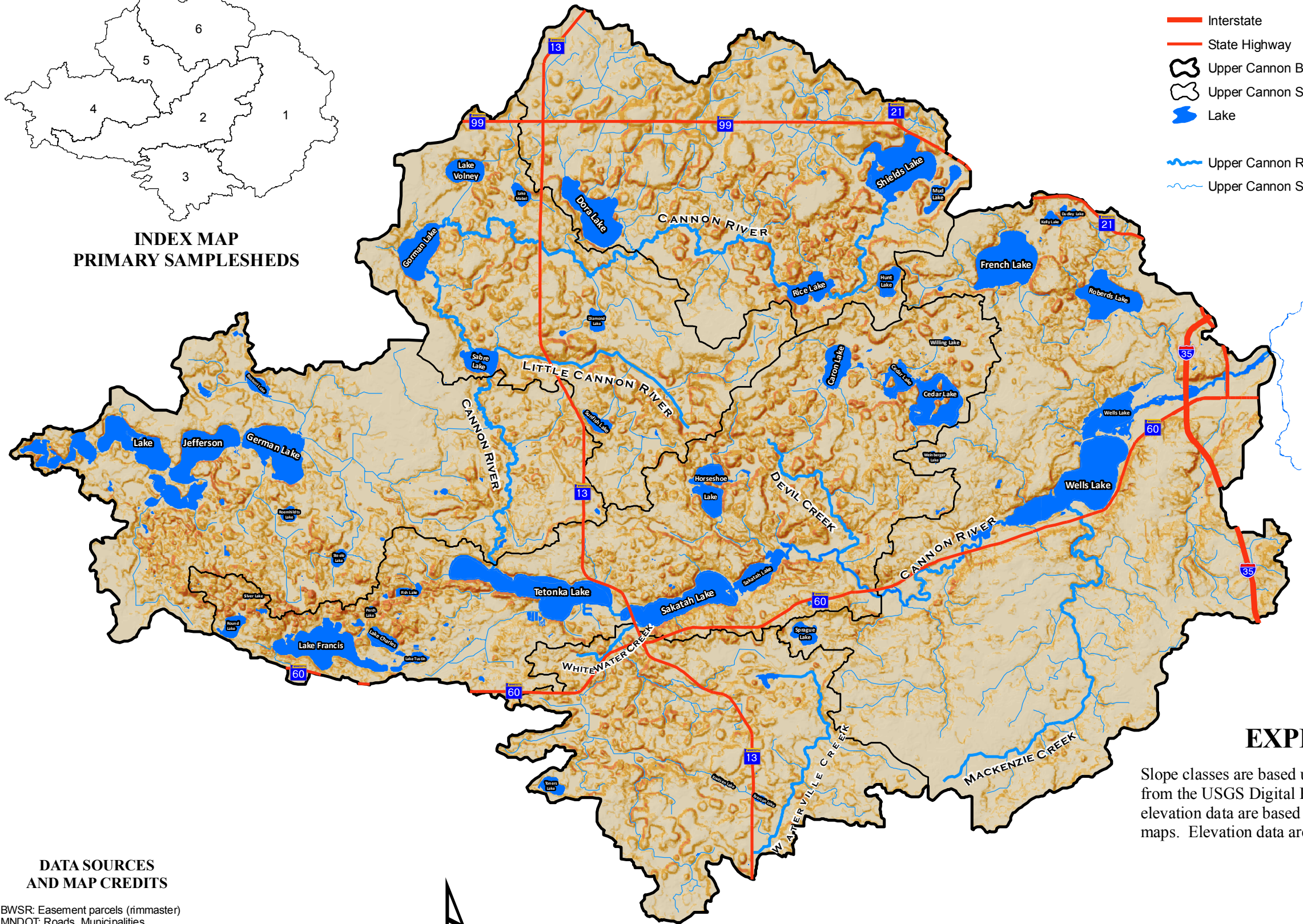


INDEX MAP
PRIMARY SAMPLESHEDS



MAP KEY

- Interstate
 - State Highway
 - Upper Cannon Boundary
 - Upper Cannon SampleShed
 - Lake
 - Upper Cannon Rivers
 - Upper Cannon Streams
- | Slope Class | |
|-------------|-----------------|
| | <= 3% |
| | > 3% and <= 6% |
| | > 6% and <= 12% |
| | > 12% |

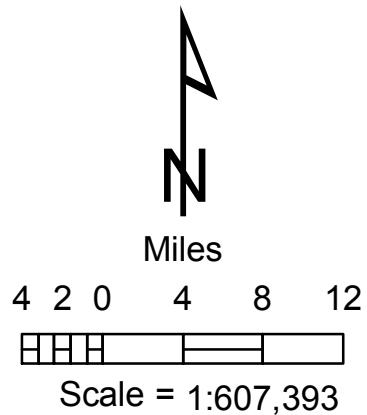
EXPLANATION

Slope classes are based upon percent slope values calculated from the USGS Digital Elevation Model (DEM) data. DEM elevation data are based upon USGS 24,000 scale topographic maps. Elevation data are collected at 30 meter (98.4 ft) intervals.

DATA SOURCES
AND MAP CREDITS

BWSR: Easement parcels (rimmaster)
 MNDOT: Roads, Municipalities
 MNDNR: State Park Statutory Boundaries
 National Land Cover Dataset
 National Wetlands Inventory (NWI)
 MRBDC: (Minnesota River Basin Data Center)
 Watershed boundaries, Streams, Lakes
 UCAP: (Upper Cannon Assessment Project)
 Monitoring sites and sub watersheds
 USFW: Wetland Reserve Program (WRP)
 Wildlife Management Area (WMA)

UPPER CANNON WATERSHED ASSESSMENT PROJECT
 Data and maps compiled by:
 Rick Moore
 Water Resources Center
 Minnesota State University, Mankato
 Date: March 31, 2008
 Software: ArcGIS 9.2



SLOPE CHARACTERISTICS

UPPER CANNON
WATERSHED



LOCATION MAP

Upper Cannon Assessment Project
 Clean Water Partnership
 Minnesota Pollution
 Control Agency
 2007-2009