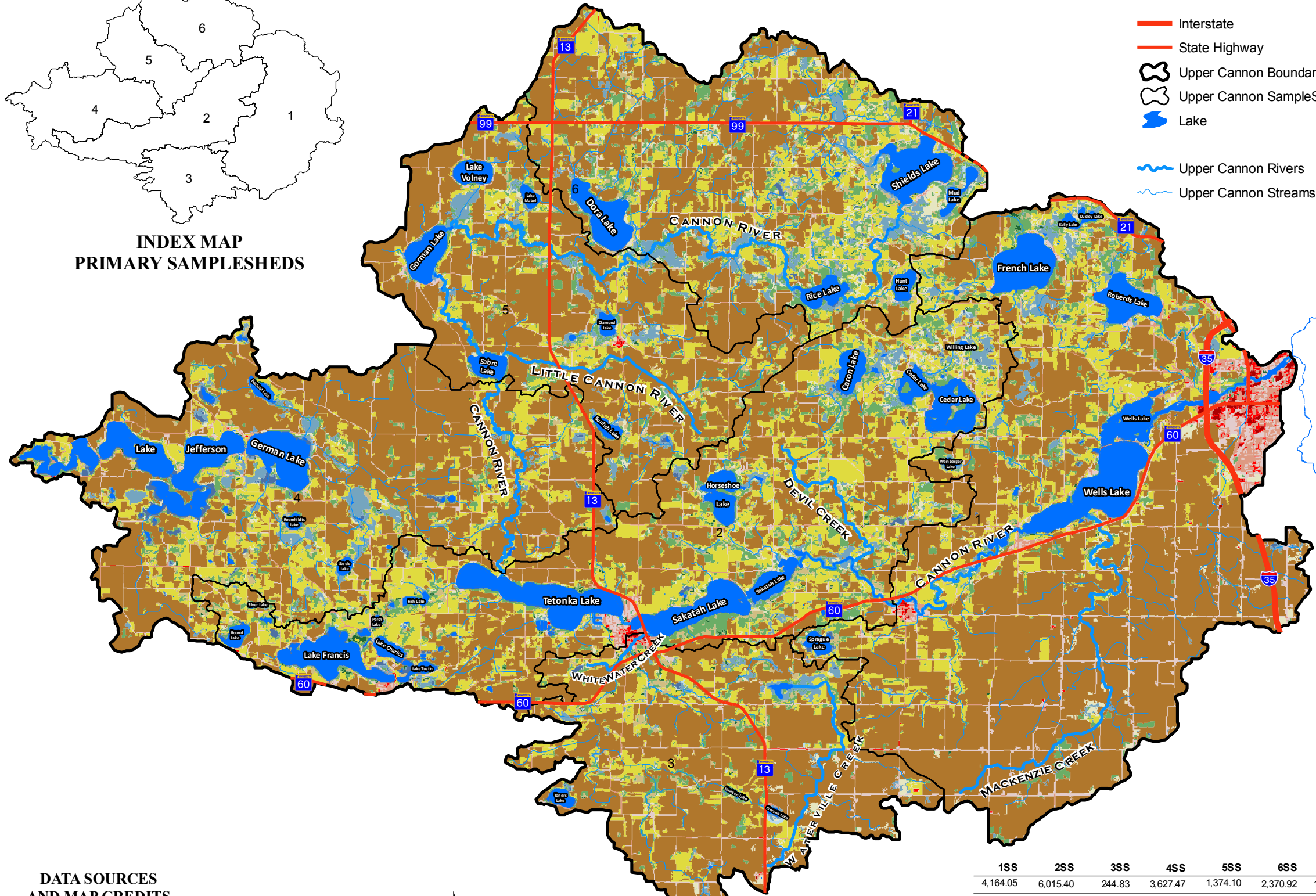


INDEX MAP
PRIMARY SAMPLESHEDS



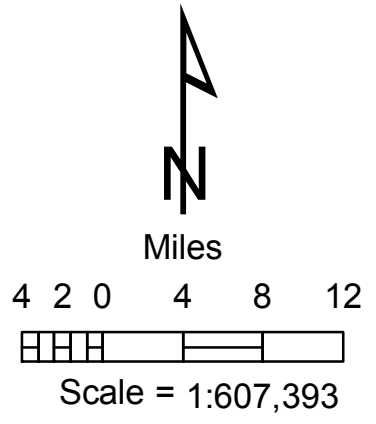
MAP KEY

- Interstate
- State Highway
- Upper Cannon Boundary
- Upper Cannon SampleShed
- Lake
- Upper Cannon Rivers
- Upper Cannon Streams
- 11 - Open Water
- 21 - Developed, Open Space
- 22 - Developed, Low Intensity
- 23 - Developed, Med Intensity
- 24 - Developed, High Intensity
- 31 - Barren Land (Rock, Sand, Clay)
- 41 - Deciduous Forest
- 42 - Evergreen Forest
- 43 - Mixed Forest
- 52 - Shrub/Scrub
- 71 - Grassland/Herbaceous
- 81 - Pasture/Hay
- 82 - Cultivated Crops
- 90 - Woody Wetlands
- 95 - Emergent Herbaceous Wetlands

DATA SOURCES
AND MAP CREDITS

BWSR: Easement parcels (rimmaster)
 MNDOT: Roads, Municipalities
 MNDNR: State Park Statutory Boundaries
 National Land Cover Dataset
 National Wetlands Inventory (NWI)
 MRBDC: (Minnesota River Basin Data Center)
 Watershed boundaries, Streams, Lakes
 UCAP: (Upper Cannon Assessment Project)
 Monitoring sites and sub watersheds
 USFW: Wetland Reserve Program (WRP)
 Wildlife Management Area (WMA)

UPPER CANNON WATERSHED ASSESSMENT PROJECT
 Data and maps compiled by:
 Rick Moore
 Water Resources Center
 Minnesota State University, Mankato
 Date: March 31, 2008
 Software: ArcGIS 9.2

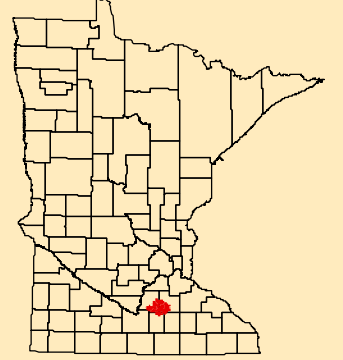


1SS	2SS	3SS	4SS	5SS	6SS	TOTAL	%
4,164.05	6,015.40	244.83	3,627.47	1,374.10	2,370.92	17,796.77	8.36
3,273.14	1,297.13	776.39	873.62	548.47	1,003.28	7,772.03	3.65
1,899.87	886.96	410.55	528.44	398.64	325.75	4,450.21	2.09
560.01	60.10	55.55	12.83	16.86	6.08	711.43	0.33
233.37	5.93	13.33	0	2.39	0	255.02	0.12
9.48	1.09	1.3	0	0	0	11.87	0.01
3,074.40	4,348.83	1,227.40	1,929.86	1,665.94	3,686.20	15,932.63	7.49
93.74	188.08	60.33	54.18	16.71	74.46	487.50	0.23
23.86	36.44	1.09	8.67	12.59	20.38	103.03	0.05
459.43	973.29	420.53	622.89	397.39	921.67	3,795.20	1.78
1,071.57	730.63	422.97	264.87	408.30	1,088.37	3,986.71	1.87
7,501.35	10,216.97	3,205.84	6,203.46	3,301.02	6,999.94	37,428.58	17.59
33,795.83	14,736.51	15,334.34	19,201.58	15,023.15	13,246.14	111,337.55	52.33
65.64	64.88	49.62	26.50	8.41	42.48	257.53	0.12
1,459.58	1,561.55	700.02	1,497.48	1,099.08	2,117.36	8,435.07	3.96
57,685.32	41,123.79	22,924.09	34,851.85	24,273.05	31,903.03	212,761.13	100.00

- Land Use (NLCD)
GRIDCODE
- 11 - Open Water
 - 21 - Developed, Open Space
 - 22 - Developed, Low Intensity
 - 23 - Developed, Med Intensity
 - 24 - Developed, High Intensity
 - 31 - Barren Land (Rock, Sand, Clay)
 - 41 - Deciduous Forest
 - 42 - Evergreen Forest
 - 43 - Mixed Forest
 - 52 - Shrub/Scrub
 - 71 - Grassland/Herbaceous
 - 81 - Pasture/Hay
 - 82 - Cultivated Crops
 - 90 - Woody Wetlands
 - 95 - Emergent Herbaceous Wetlands
 - Total

LAND USE AND COVER

UPPER CANNON WATERSHED



LOCATION MAP

Upper Cannon Assessment Project
 Clean Water Partnership
 Minnesota Pollution
 Control Agency
 2007-2009