



Welcome

Near-Channel Sediment Source Management Forum

**As a courtesy to the forum speakers and guests, please silence your cell phones.
Thank You!**



Minnesota River Valley Ravine Stabilization Charrette

January 19, 2011 DRAFT

February 7, 2011 FINAL



Prepared by:
Emmons & Olivier Resources, Inc.

Sponsored by:
The Scott Watershed Management Organization
and the Minnesota River Board





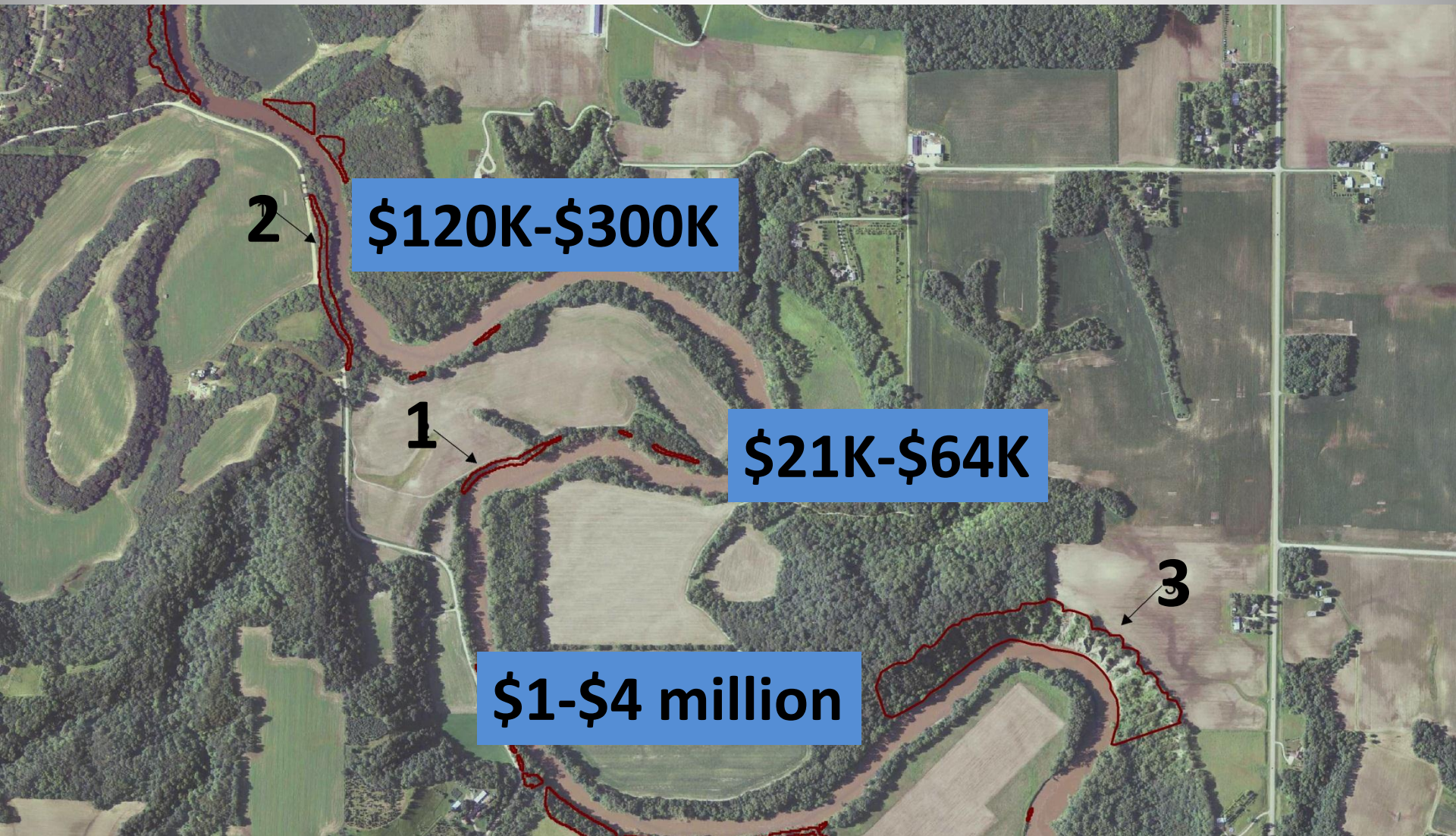
co·nun·drum

:an intricate and challenging problem with conjectural answers

con·jec·ture

:the formation of an opinion or theory without sufficient evidence

Three Phases of Sediment Management: Prevention – Interdiction – Restoration



2

\$120K-\$300K

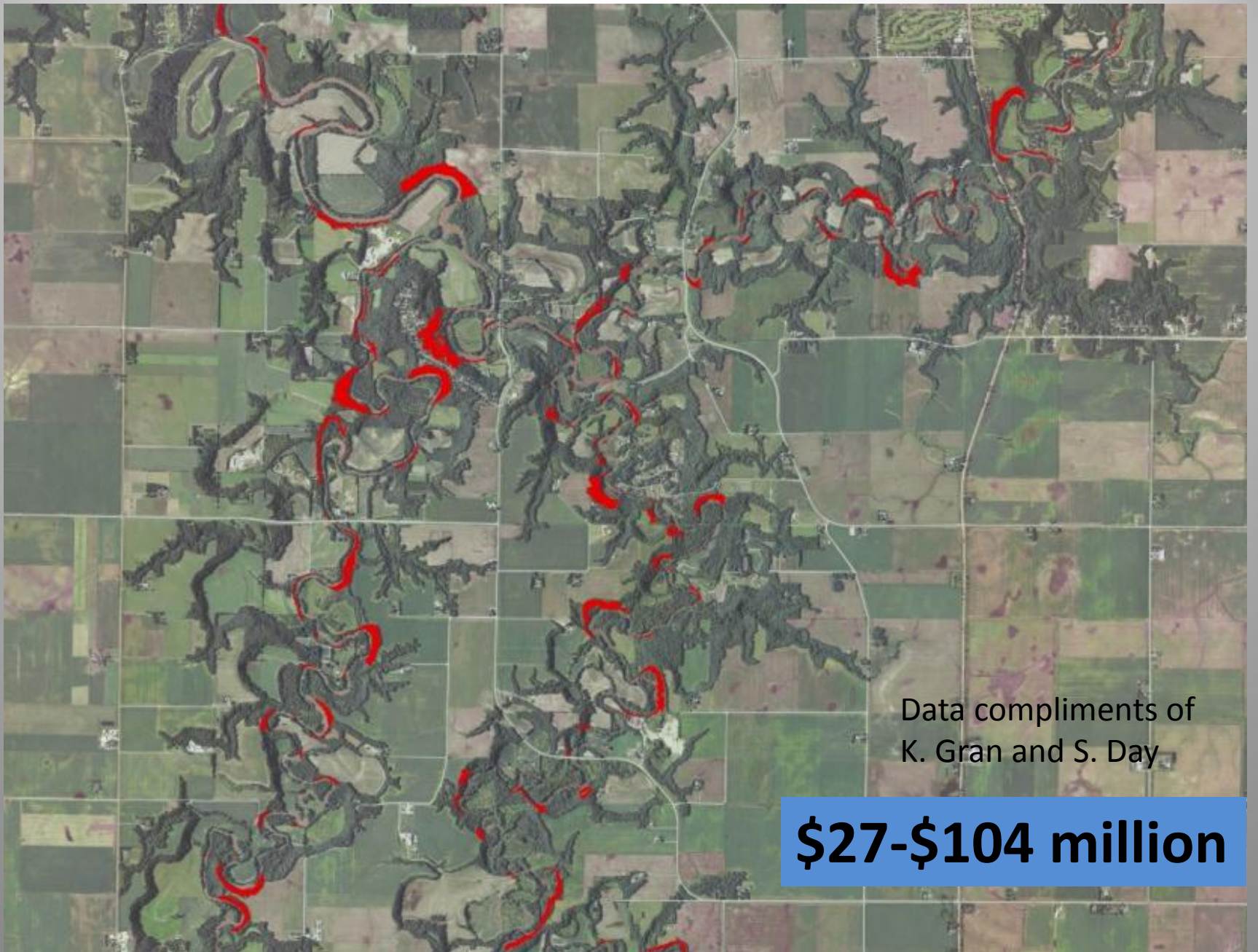
1

\$21K-\$64K

3

\$1-\$4 million

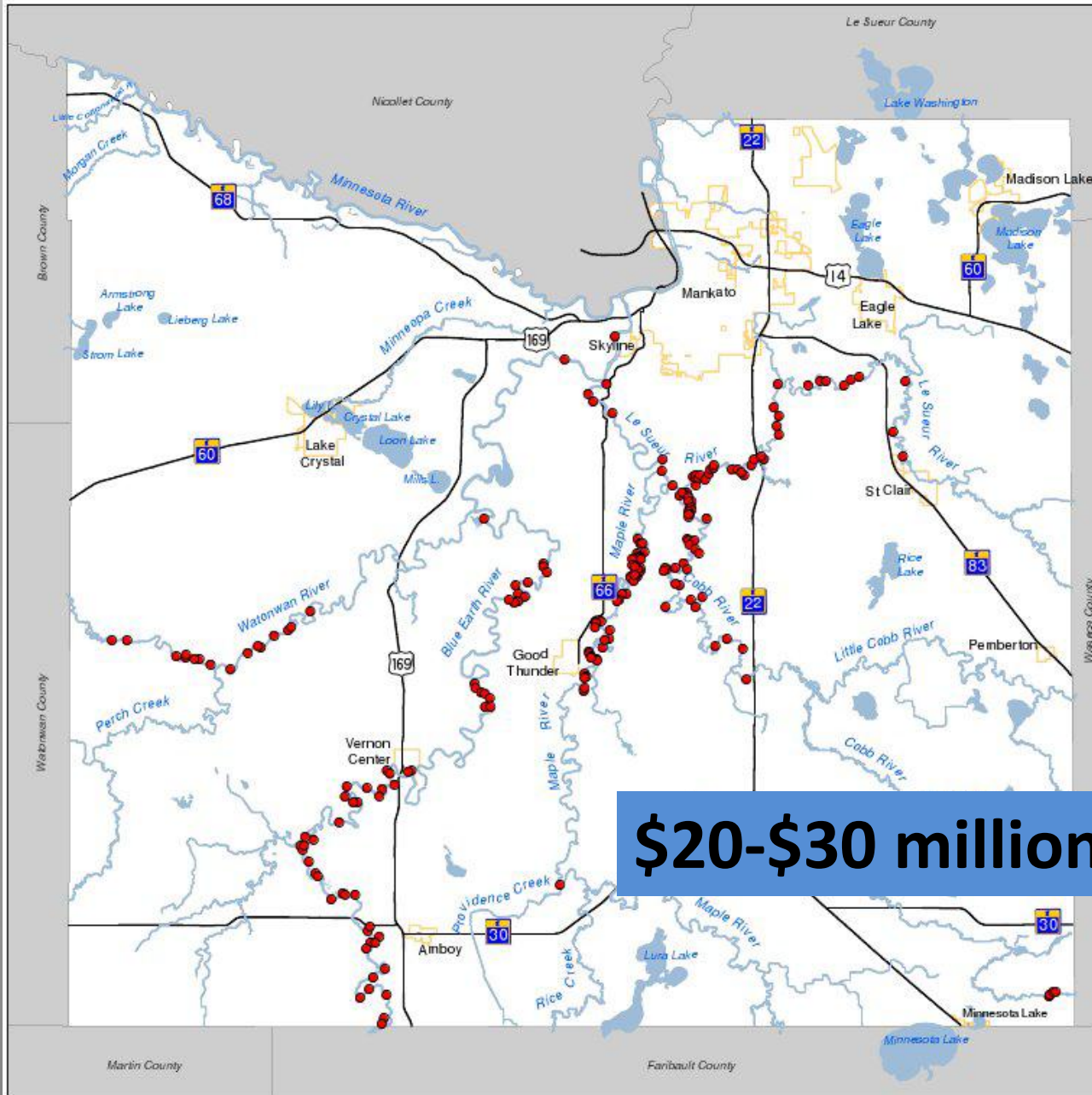
Data compliments of
K. Gran and S. Day



Data compliments of
K. Gran and S. Day

\$27-\$104 million

Potential Stream Channel Stabilization Design Projects



Compliments of the Blue Earth Soil and Water Conservation District (J. Bach)

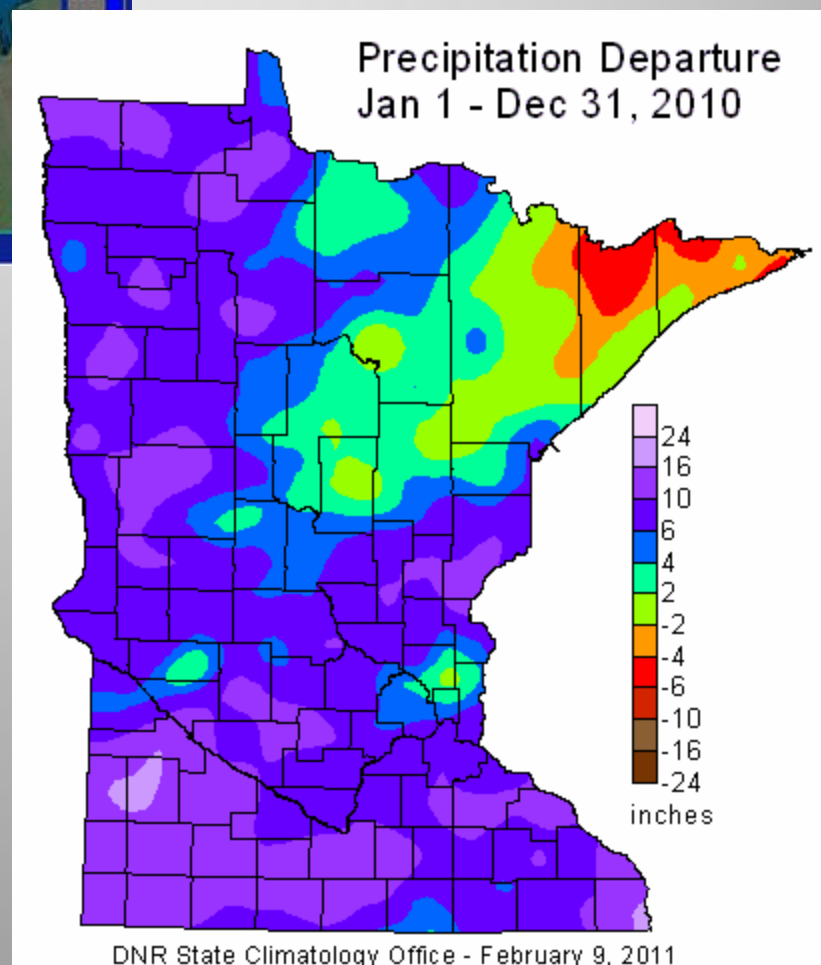
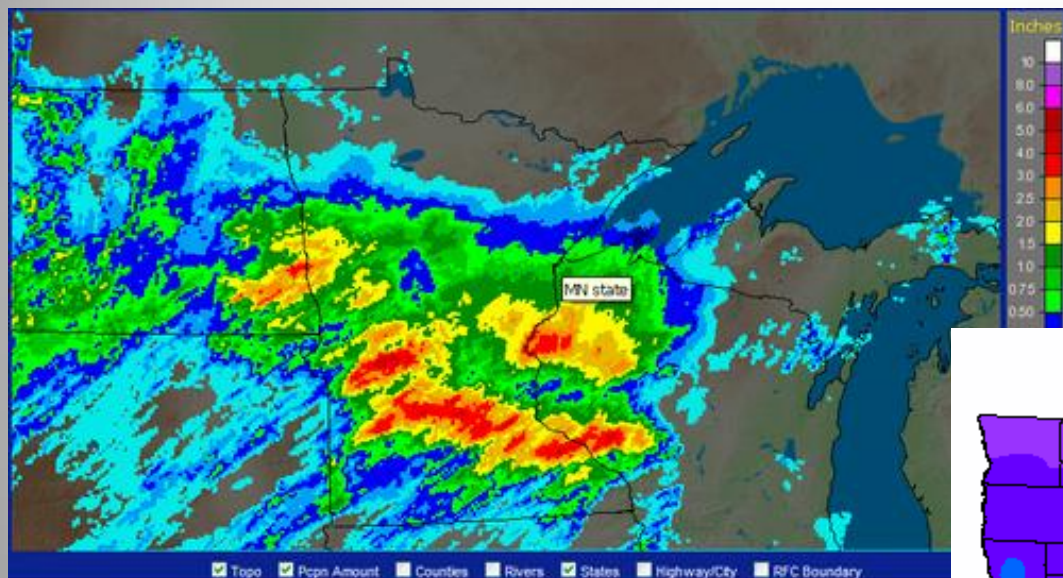
\$20-\$30 million



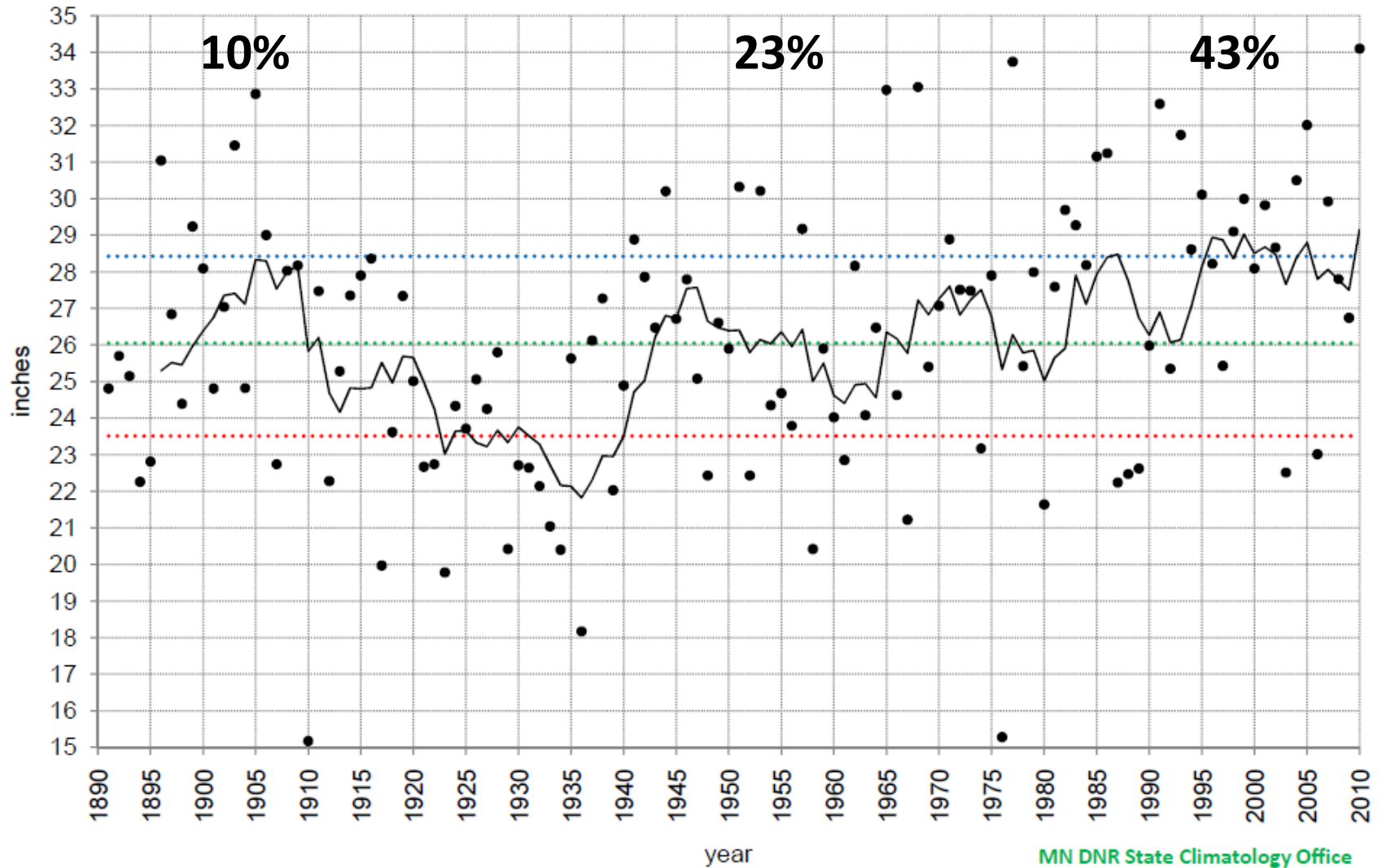


716K urban acres
7.8 million cropland acres



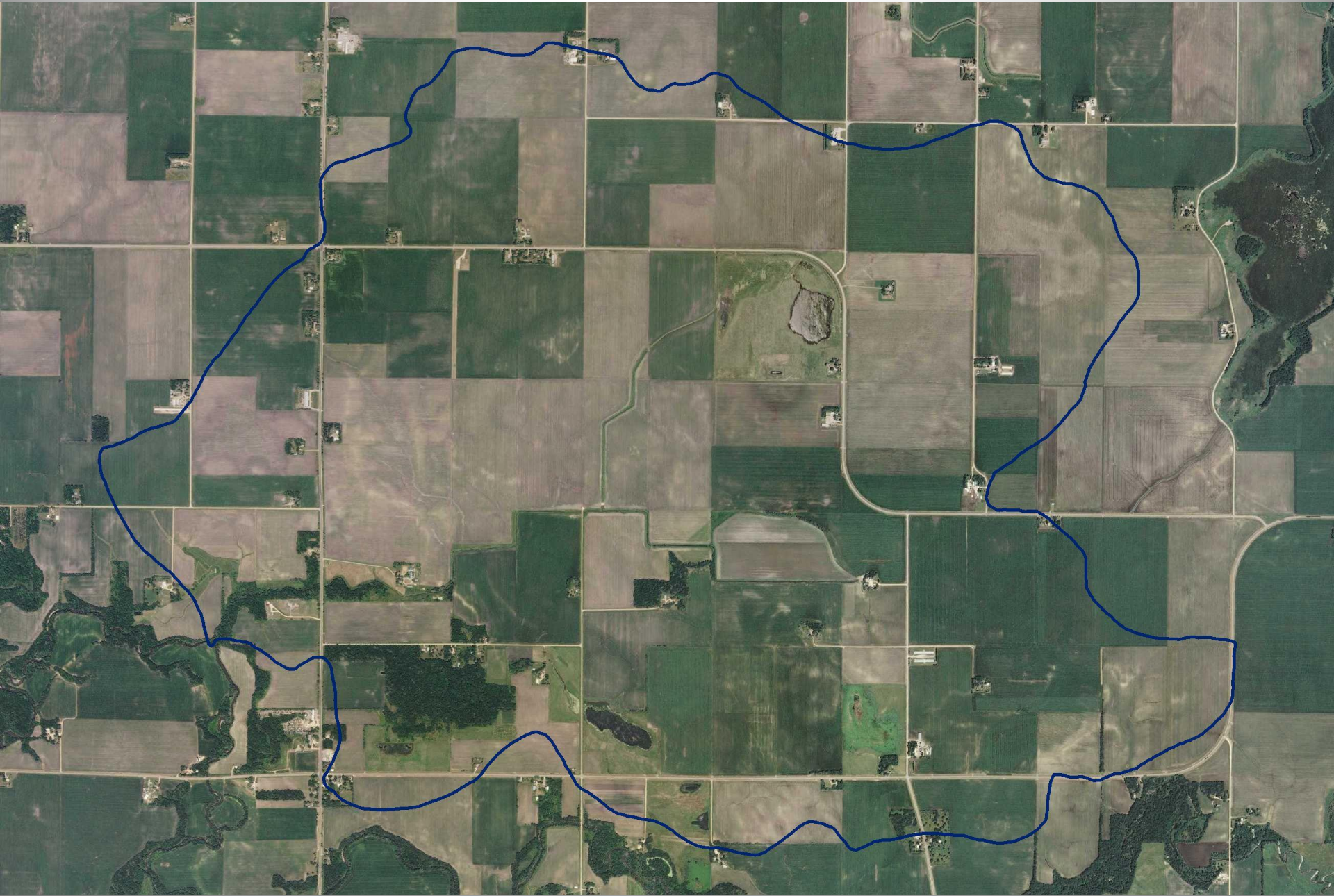


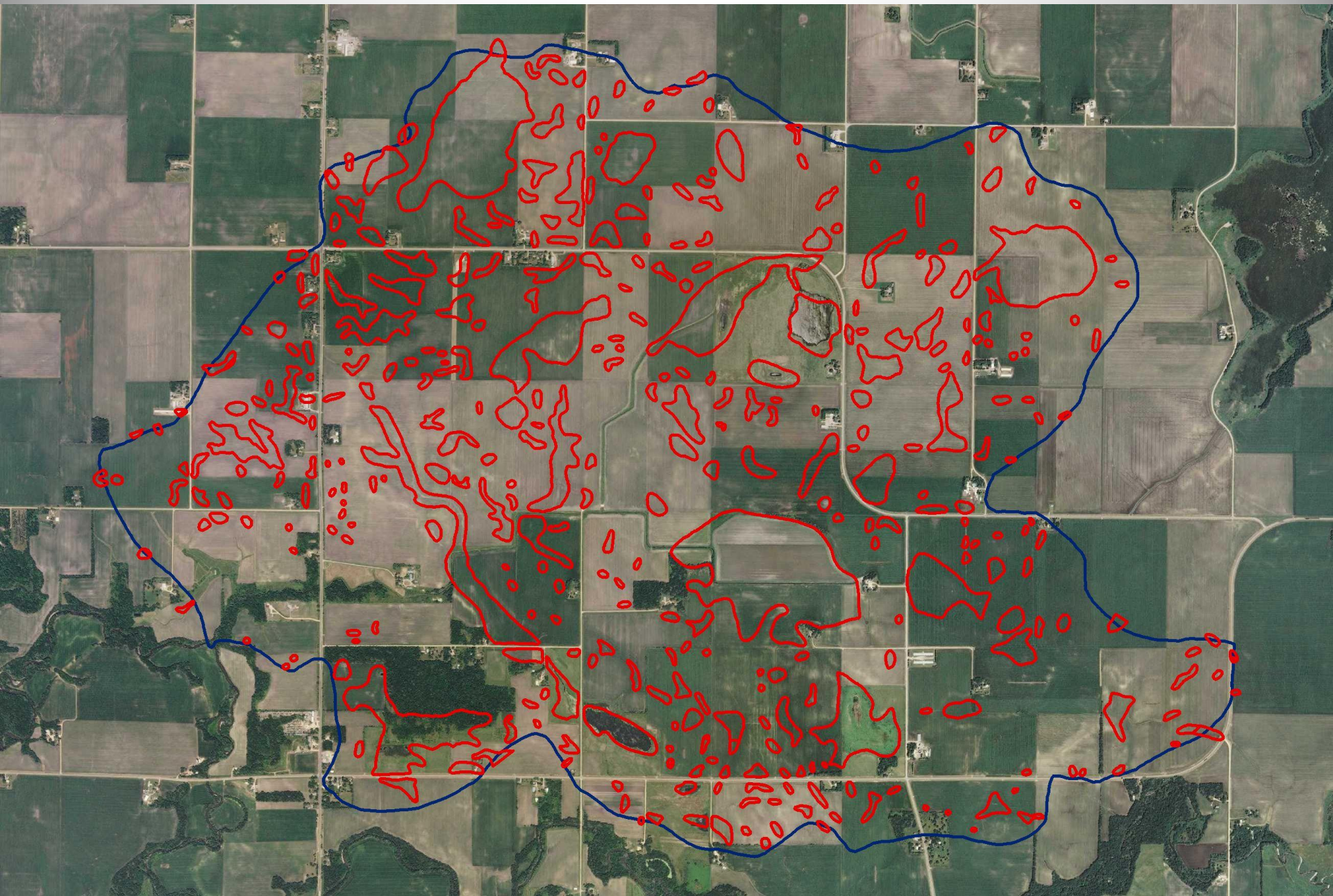
Minnesota State-Averaged Annual Precipitation

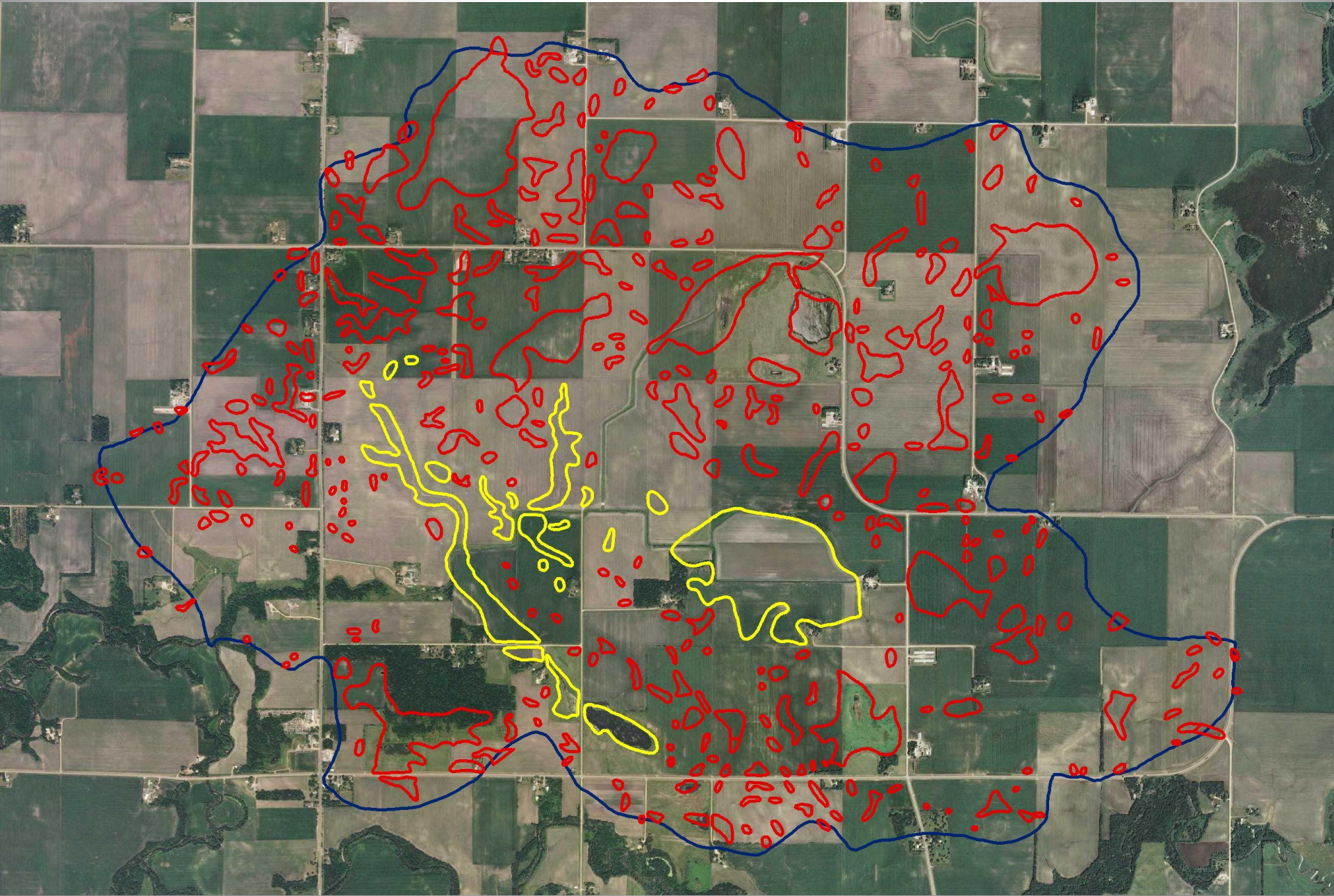


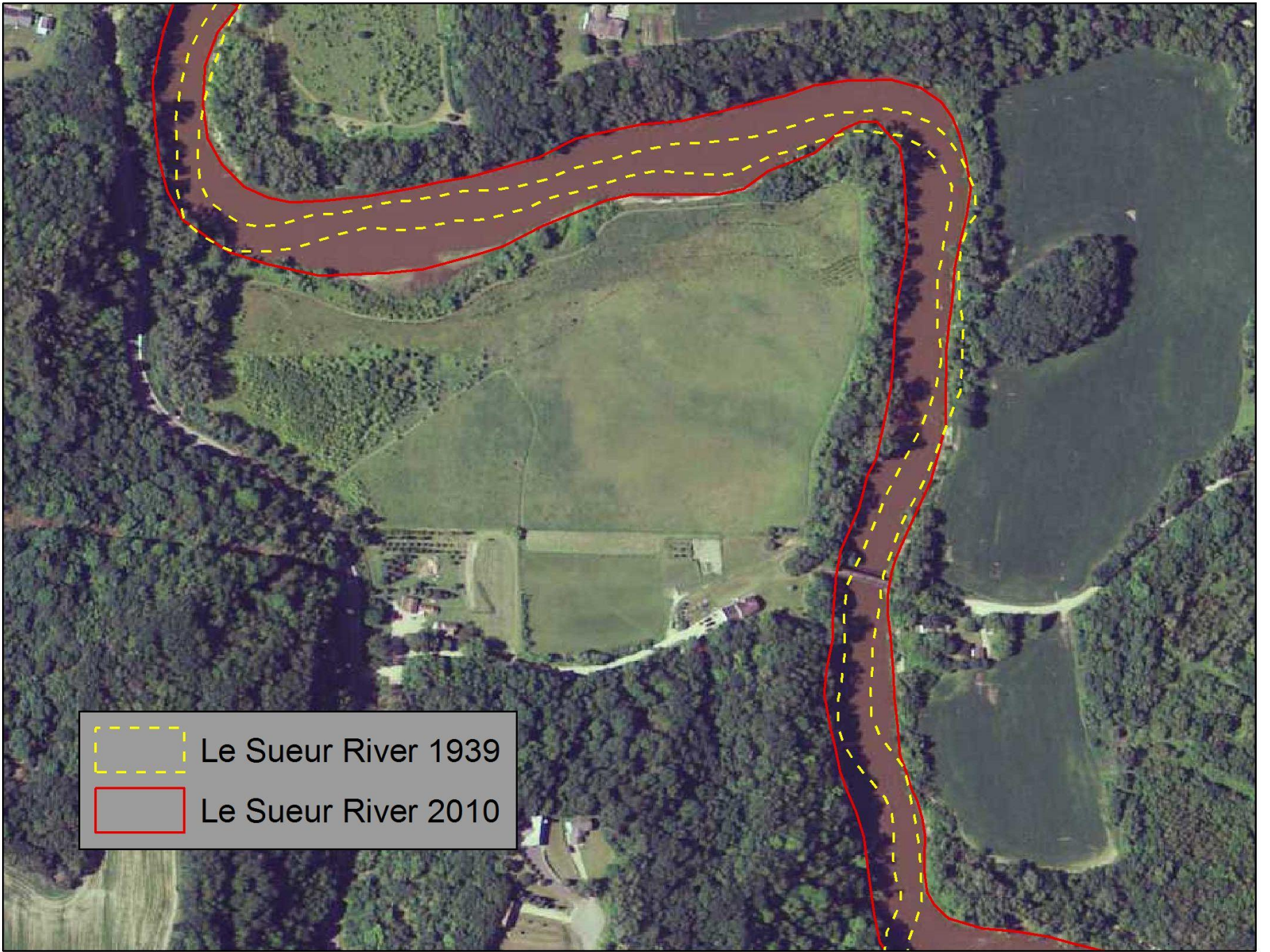
MN DNR State Climatology Office

- annual precipitation
- 25th percentile
- median
- 75th percentile
- seven-year moving average









----- Le Sueur River 1939
----- Le Sueur River 2010

Near-Channel Sediment Management Forum

- ✓ **Magnitude**
- ✓ **Circumstances**
- ✓ **Management**
- ✓ **Prioritization**
- ✓ **Innovation**

- ✓ **Opportunity**
- ✓ **Networking**

