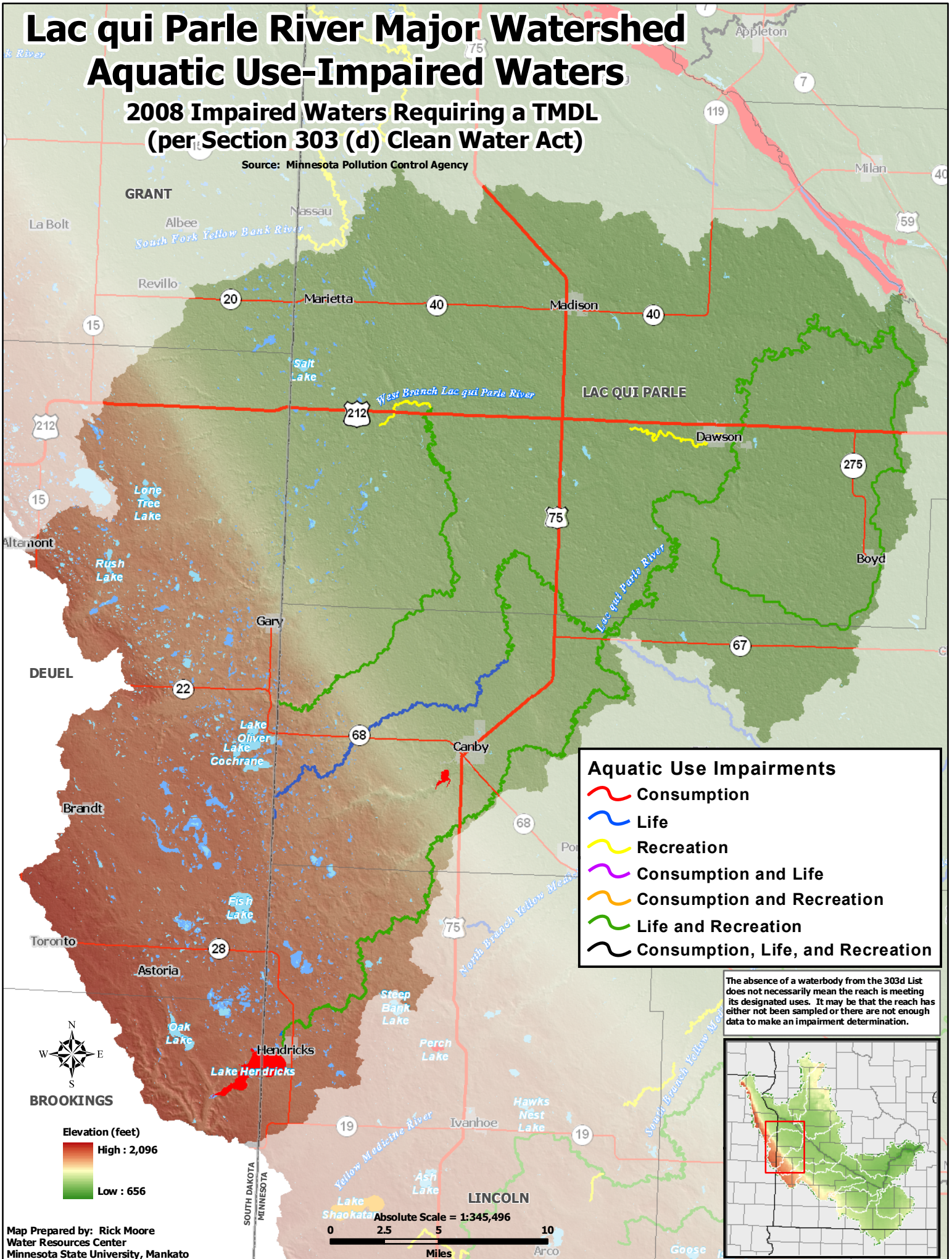









Lac qui Parle River Major Watershed Aquatic Use-Impaired Waters

2008 Impaired Waters Requiring a TMDL (per Section 303 (d) Clean Water Act)

Source: Minnesota Pollution Control Agency



Aquatic Use Impairments

-  Consumption
-  Life
-  Recreation
-  Consumption and Life
-  Consumption and Recreation
-  Life and Recreation
-  Consumption, Life, and Recreation

The absence of a waterbody from the 303d List does not necessarily mean the reach is meeting its designated uses. It may be that the reach has either not been sampled or there are not enough data to make an impairment determination.

