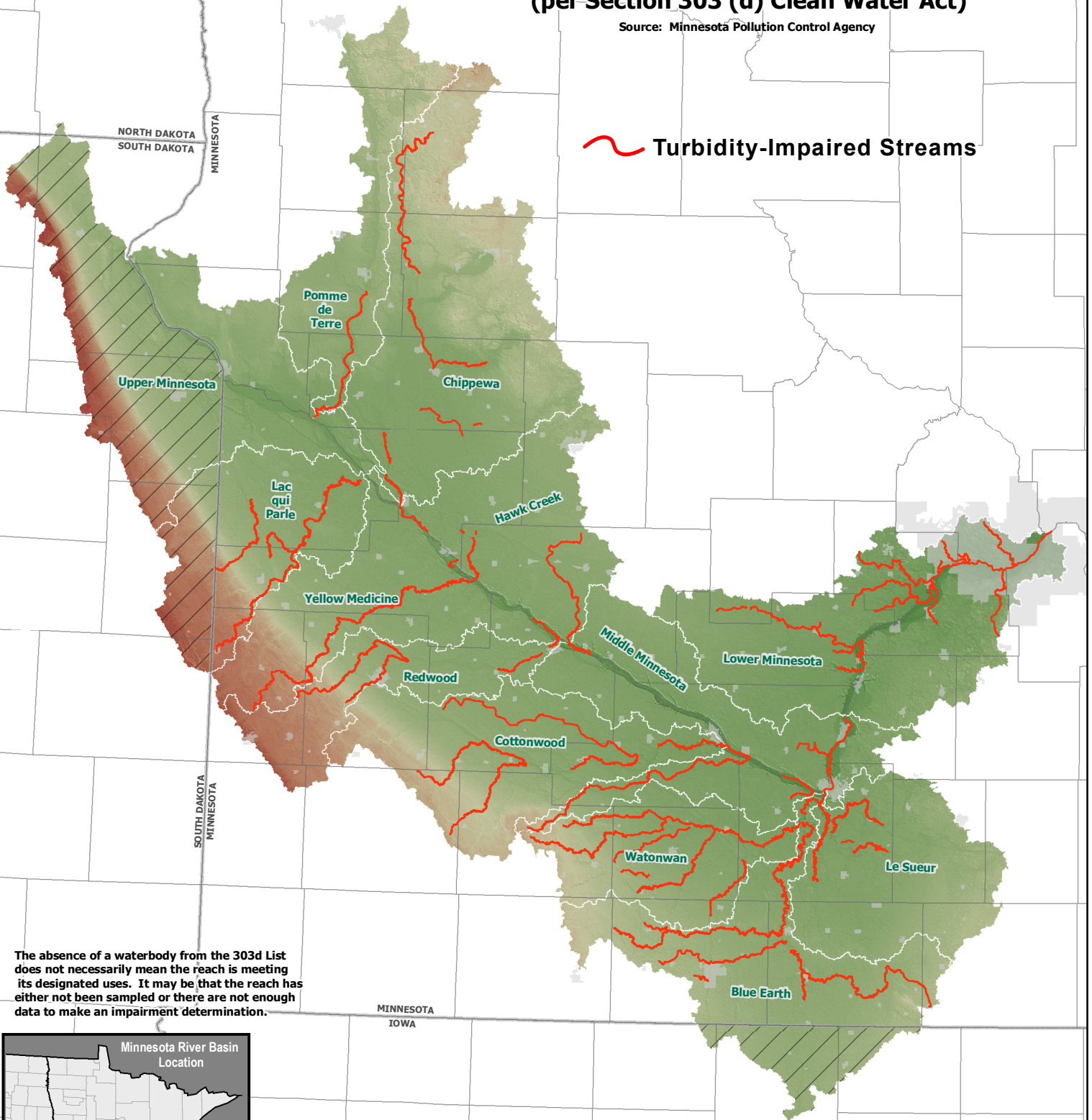


Minnesota River Basin Turbidity-Impaired Streams

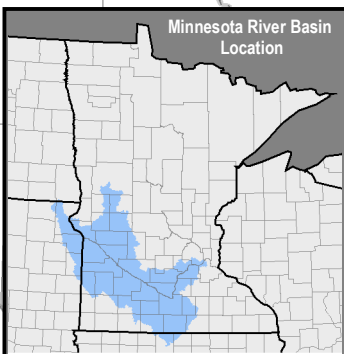
2008 Impaired Waters Requiring a TMDL
(per Section 303 (d) Clean Water Act)

Source: Minnesota Pollution Control Agency

 Turbidity-Impaired Streams



The absence of a waterbody from the 303d List does not necessarily mean the reach is meeting its designated uses. It may be that the reach has either not been sampled or there are not enough data to make an impairment determination.

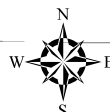


Major Watershed

 No Data

Absolute Scale = 1:1,700,000

0 12.5 25 50
Miles



Elevation (feet)
High : 2,096
Low : 656

Map Prepared by: Rick Moore
Water Resources Center
Minnesota State University, Mankato
August 25, 2008