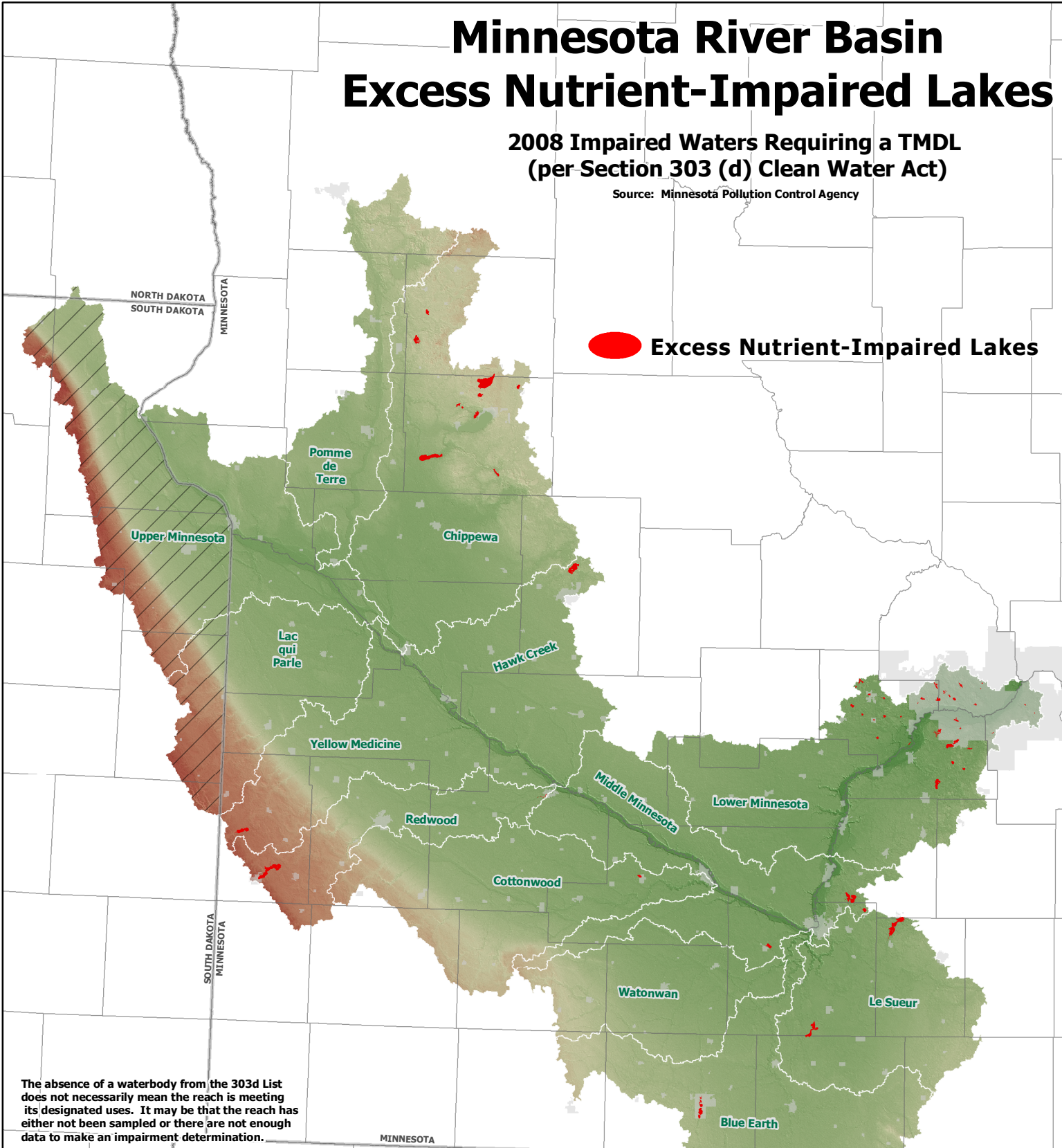


Minnesota River Basin Excess Nutrient-Impaired Lakes

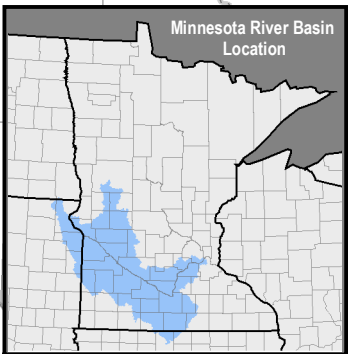
2008 Impaired Waters Requiring a TMDL
(per Section 303 (d) Clean Water Act)

Source: Minnesota Pollution Control Agency



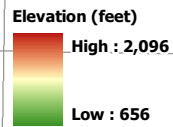
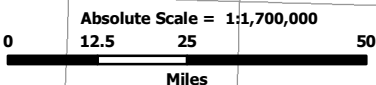
 Excess Nutrient-Impaired Lakes

The absence of a waterbody from the 303d List does not necessarily mean the reach is meeting its designated uses. It may be that the reach has either not been sampled or there are not enough data to make an impairment determination.



Major Watershed

 No Data



Map Prepared by: Rick Moore
Water Resources Center
Minnesota State University, Mankato
August 25, 2008