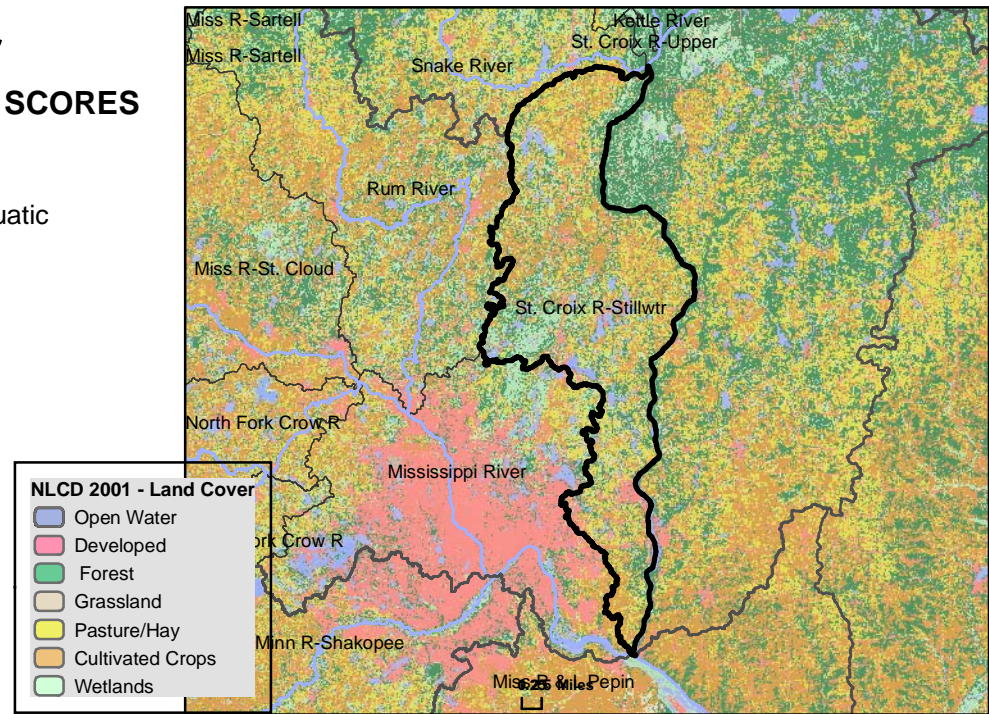


St. Croix R-Stillwtr

WATERSHED HEALTH ASSESSMENT SCORES

Mean (average) Health Score 59
Minimum Health Index Score 13
Minimum Health Index: Connectivity - Aquatic

Watershed Assessment Tool
http://www.dnr.state.mn.us/watershed_tool



Watershed Health Scores compare and rank various aspects of ecological health across Minnesota. Index values are based on a variety of data sources, calculations and scientific approaches. Each index is scored on a scale from 0 to 100, with 0 being the least desirable result or condition to 100 being the best existing condition or most desirable result. Major watershed scale rankings may mask the range of conditions that occur at more local scales. A high score may indicate the least impacted condition in Minnesota, not necessarily a healthy condition.

COMPONENT SCORES

HYDROLOGY	GEOMORPHOLOGY	BIOLOGY	CONNECTIVITY	WATER QUALITY
Mean (Ave.) 75 Minimum Index 64	Mean (Ave.) 60 Minimum Index 29	Mean (Ave.) 57 Minimum Index 16	Mean (Ave.) 39 Minimum Index 13	Mean (Ave.) 62 Minimum Index 49
INDEX SCORES Perennial Cover 64 Impervious Cover 69* Withdrawal 97* Storage 76 Flow Variability 66 Metric Sub-Scores Storage: Stream/Ditch Ratio 62 Surface storage 90	INDEX SCORES Soil Erosion Susceptibility 72 Groundwater Susceptibility 29 Climate Vulnerability 78	INDEX SCORES Terrestrial Habitat Quality 16 Stream Species 76 Species Richness 77 At-Risk Species Richness 59	INDEX SCORES Terrestrial Habitat Connectivity 19 Aquatic Connectivity 13 Riparian Connectivity 84 Metric Sub-Scores Aquatic Connectivity: Bridges/Culverts 16 Dams 11	INDEX SCORES Non-Point Source 49 Point Source Assessments 88* Assessments 50 Metric Sub-Scores Non-Point Source: Nutrient Application 84 Riparian Impervious 13

*These index values are influenced by very low scores associated with dense urban use of resources. This gives comparatively high scores for outstate Minnesota. Viewing input data is necessary to evaluate possible watershed scale concerns.