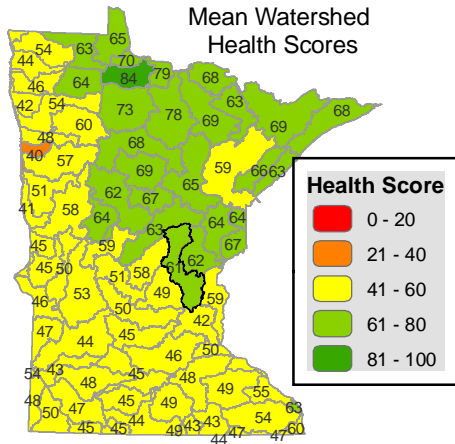


Rum River

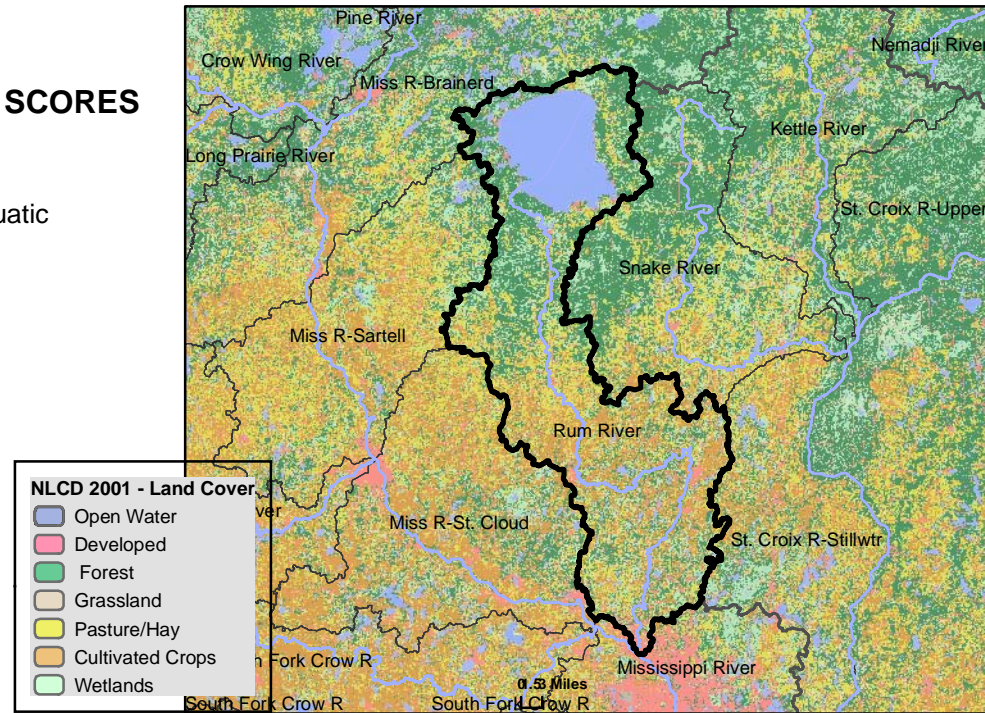
WATERSHED HEALTH ASSESSMENT SCORES

Mean (average) Health Score 61
Minimum Health Index Score 15
Minimum Health Index: Connectivity - Aquatic

Watershed Assessment Tool
http://www.dnr.state.mn.us/watershed_tool



Watershed Health Scores compare and rank various aspects of ecological health across Minnesota. Index values are based on a variety of data sources, calculations and scientific approaches. Each index is scored on a scale from 0 to 100, with 0 being the least desirable result or condition to 100 being the best existing condition or most desirable result. Major watershed scale rankings may mask the range of conditions that occur at more local scales. A high score may indicate the least impacted condition in Minnesota, not necessarily a healthy condition.



COMPONENT SCORES

HYDROLOGY	GEOMORPHOLOGY	BIOLOGY	CONNECTIVITY	WATER QUALITY
Mean (Ave.) 78 Minimum Index 71	Mean (Ave.) 64 Minimum Index 42	Mean (Ave.) 53 Minimum Index 18	Mean (Ave.) 41 Minimum Index 15	Mean (Ave.) 71 Minimum Index 56
INDEX SCORES Perennial Cover 72 Impervious Cover 75* Withdrawal 98* Storage 71 Flow Variability 73 Metric Sub-Scores Storage: Stream/Ditch Ratio 53 Surface storage 89	INDEX SCORES Soil Erosion Susceptibility 81 Groundwater Susceptibility 42 Climate Vulnerability 70	INDEX SCORES Terrestrial Habitat Quality 18 Stream Species 91 Species Richness 61 At-Risk Species Richness 42	INDEX SCORES Terrestrial Habitat Connectivity 24 Aquatic Connectivity 15 Riparian Connectivity 83 Metric Sub-Scores Aquatic Connectivity: Bridges/Culverts 16 Dams 15	INDEX SCORES Non-Point Source 56 Point Source 93* Assessments 64 Metric Sub-Scores Non-Point Source: Nutrient Application 86 Riparian Impervious 26

*These index values are influenced by very low scores associated with dense urban use of resources. This gives comparatively high scores for outstate Minnesota. Viewing input data is necessary to evaluate possible watershed scale concerns.