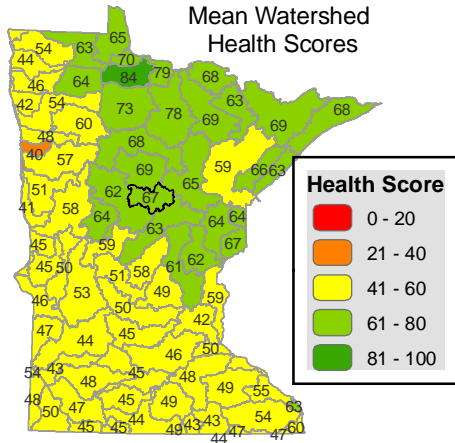


Pine River

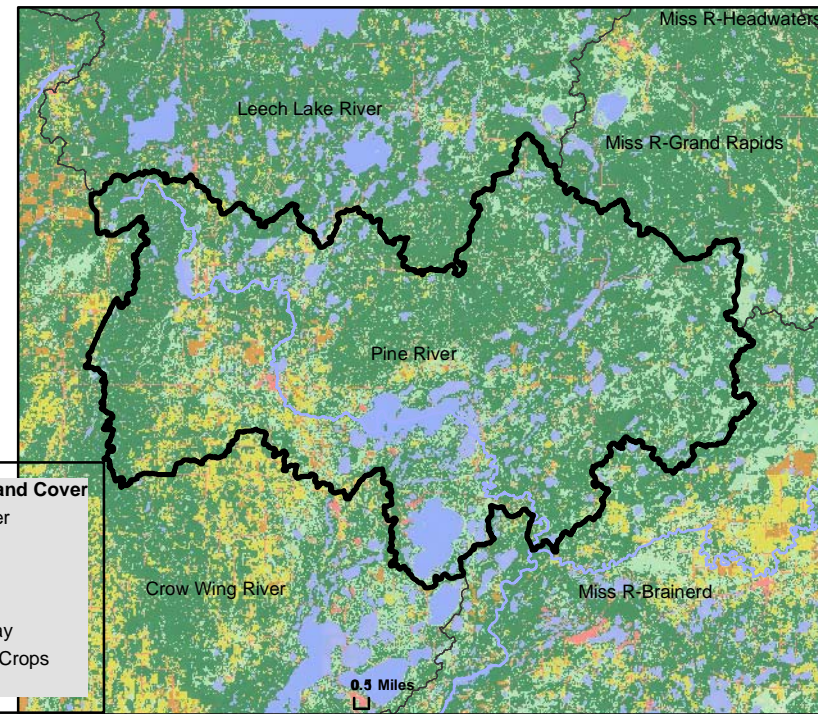
WATERSHED HEALTH ASSESSMENT SCORES

Mean (average) Health Score 67
Minimum Health Index Score 10
Minimum Health Index: Connectivity - Aquatic

Watershed Assessment Tool
http://www.dnr.state.mn.us/watershed_tool



Watershed Health Scores compare and rank various aspects of ecological health across Minnesota. Index values are based on a variety of data sources, calculations and scientific approaches. Each index is scored on a scale from 0 to 100, with 0 being the least desirable result or condition to 100 being the best existing condition or most desirable result. Major watershed scale rankings may mask the range of conditions that occur at more local scales. A high score may indicate the least impacted condition in Minnesota, not necessarily a healthy condition.



COMPONENT SCORES

HYDROLOGY	GEOMORPHOLOGY	BIOLOGY	CONNECTIVITY	WATER QUALITY
Mean (Ave.) 91 Minimum Index 68	Mean (Ave.) 59 Minimum Index 31	Mean (Ave.) 43 Minimum Index 21	Mean (Ave.) 46 Minimum Index 10	Mean (Ave.) 95 Minimum Index 90
INDEX SCORES Perennial Cover 94 Impervious Cover 98* Withdrawal 99* Storage 94 Flow Variability 68 Metric Sub-Scores Storage: Stream/Ditch Ratio 91 Surface storage 98	INDEX SCORES Soil Erosion Susceptibility 75 Groundwater Susceptibility 31 Climate Vulnerability 70	INDEX SCORES Terrestrial Habitat Quality 21 Stream Species 58 Species Richness 54 At-Risk Species Richness 38	INDEX SCORES Terrestrial Habitat Connectivity 30 Aquatic Connectivity 10 Riparian Connectivity 97 Metric Sub-Scores Aquatic Connectivity: Bridges/Culverts 18 Dams 3	INDEX SCORES Non-Point Source 90 Point Source 99* Assessments 95 Metric Sub-Scores Non-Point Source: Nutrient Application 99 Riparian Impervious 82

*These index values are influenced by very low scores associated with dense urban use of resources. This gives comparatively high scores for outstate Minnesota. Viewing input data is necessary to evaluate possible watershed scale concerns.