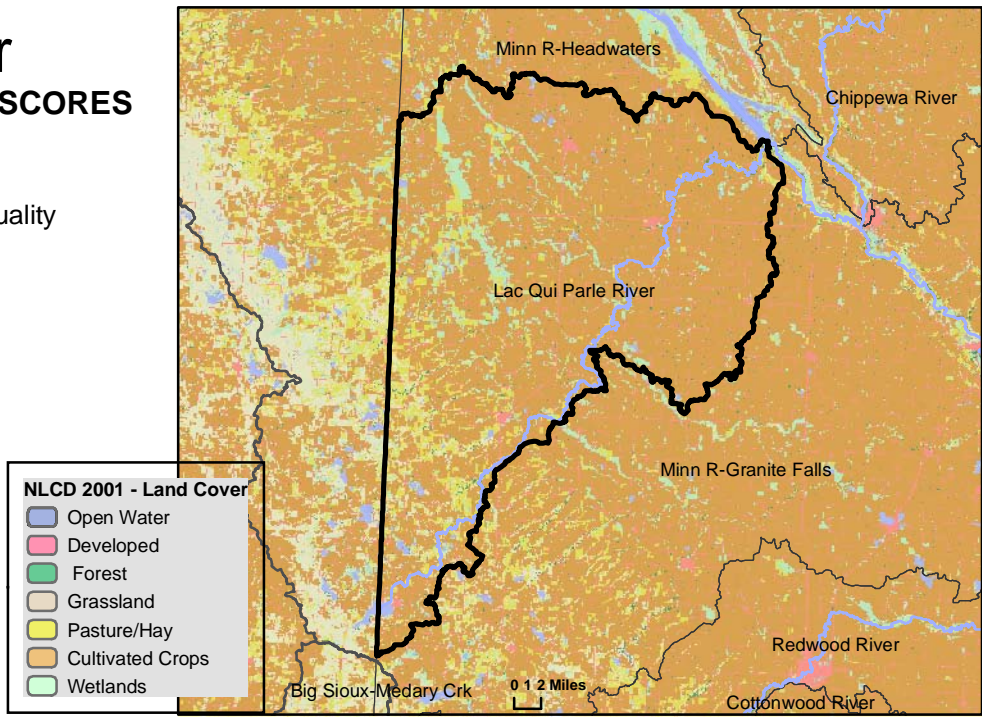


Lac Qui Parle River

WATERSHED HEALTH ASSESSMENT SCORES

Mean (average) Health Score 47
 Minimum Health Index Score 5
 Minimum Health Index: Biology - Habitat Quality

Watershed Assessment Tool
http://www.dnr.state.mn.us/watershed_tool



Watershed Health Scores compare and rank various aspects of ecological health across Minnesota. Index values are based on a variety of data sources, calculations and scientific approaches. Each index is scored on a scale from 0 to 100, with 0 being the least desirable result or condition to 100 being the best existing condition or most desirable result. Major watershed scale rankings may mask the range of conditions that occur at more local scales. A high score may indicate the least impacted condition in Minnesota, not necessarily a healthy condition.

COMPONENT SCORES

HYDROLOGY	GEOMORPHOLOGY	BIOLOGY	CONNECTIVITY	WATER QUALITY
Mean (Ave.) 62 Minimum Index 19	Mean (Ave.) 48 Minimum Index 22	Mean (Ave.) 39 Minimum Index 5	Mean (Ave.) 24 Minimum Index 8	Mean (Ave.) 64 Minimum Index 38
INDEX SCORES Perennial Cover 19 Impervious Cover 95* Withdrawal 99* Storage 37 Flow Variability 61 Metric Sub-Scores Storage: Stream/Ditch Ratio 46 Surface storage 28	INDEX SCORES Soil Erosion Susceptibility 73 Groundwater Susceptibility 50 Climate Vulnerability 22	INDEX SCORES Terrestrial Habitat Quality 5 Stream Species 74 Species Richness 53 At-Risk Species Richness 23	INDEX SCORES Terrestrial Habitat Connectivity 8 Aquatic Connectivity 12 Riparian Connectivity 51 Metric Sub-Scores Aquatic Connectivity: Bridges/Culverts 10 Dams 14	INDEX SCORES Non-Point Source 38 Point Source Assessments 93* Assessments 62 Metric Sub-Scores Non-Point Source: Nutrient Application 34 Riparian Impervious 41

*These index values are influenced by very low scores associated with dense urban use of resources. This gives comparatively high scores for outstate Minnesota. Viewing input data is necessary to evaluate possible watershed scale concerns.