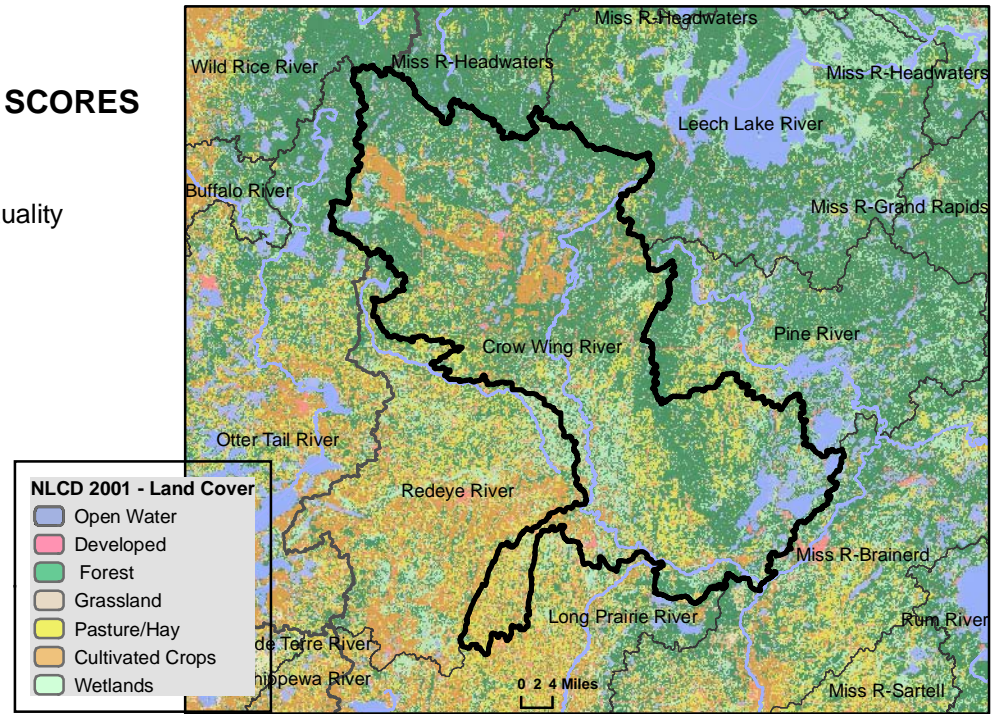


Crow Wing River

WATERSHED HEALTH ASSESSMENT SCORES

Mean (average) Health Score 62
Minimum Health Index Score 9
Minimum Health Index: Biology - Habitat Quality

Watershed Assessment Tool
http://www.dnr.state.mn.us/watershed_tool



Watershed Health Scores compare and rank various aspects of ecological health across Minnesota. Index values are based on a variety of data sources, calculations and scientific approaches. Each index is scored on a scale from 0 to 100, with 0 being the least desirable result or condition to 100 being the best existing condition or most desirable result. Major watershed scale rankings may mask the range of conditions that occur at more local scales. A high score may indicate the least impacted condition in Minnesota, not necessarily a healthy condition.

COMPONENT SCORES

HYDROLOGY	GEOMORPHOLOGY	BIOLOGY	CONNECTIVITY	WATER QUALITY
Mean (Ave.) 84 Minimum Index 74	Mean (Ave.) 63 Minimum Index 24	Mean (Ave.) 41 Minimum Index 9	Mean (Ave.) 41 Minimum Index 14	Mean (Ave.) 79 Minimum Index 58
INDEX SCORES Perennial Cover 84 Impervious Cover 92 * Withdrawal 94 * Storage 75 Flow Variability 74 Metric Sub-Scores Storage: Stream/Ditch Ratio 53 Surface storage 97	INDEX SCORES Soil Erosion Susceptibility 79 Groundwater Susceptibility 24 Climate Vulnerability 88	INDEX SCORES Terrestrial Habitat Quality 9 Stream Species 55 Species Richness 58 At-Risk Species Richness 40	INDEX SCORES Terrestrial Habitat Connectivity 15 Aquatic Connectivity 14 Riparian Connectivity 94 Metric Sub-Scores Aquatic Connectivity: Bridges/Culverts 21 Dams 7	INDEX SCORES Non-Point Source 82 Point Source 96 * Assessments 58 Metric Sub-Scores Non-Point Source: Nutrient Application 94 Riparian Impervious 69

*These index values are influenced by very low scores associated with dense urban use of resources. This gives comparatively high scores for outstate Minnesota. Viewing input data is necessary to evaluate possible watershed scale concerns.