

# Minnesota River Basin Excess Nutrients-Impaired Waters

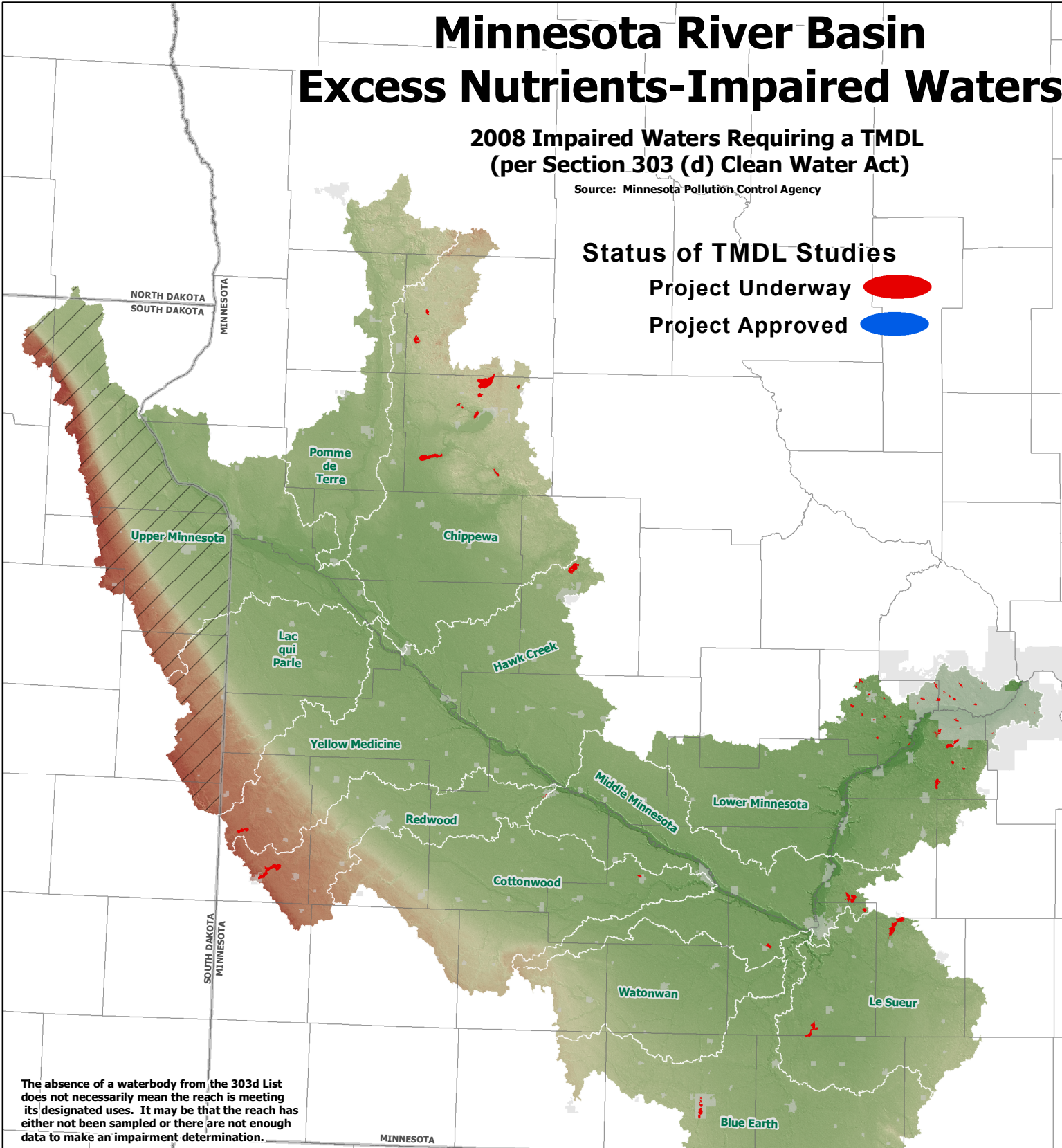
2008 Impaired Waters Requiring a TMDL  
(per Section 303 (d) Clean Water Act)

Source: Minnesota Pollution Control Agency

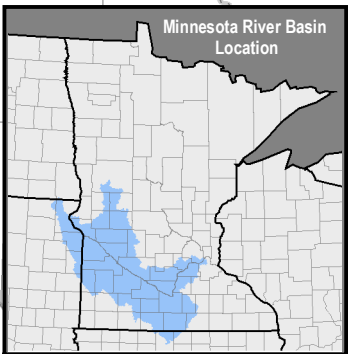
## Status of TMDL Studies

Project Underway 

Project Approved 

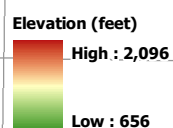
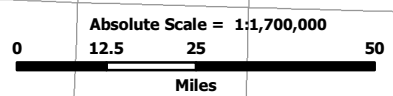


The absence of a waterbody from the 303d List does not necessarily mean the reach is meeting its designated uses. It may be that the reach has either not been sampled or there are not enough data to make an impairment determination.



### Major Watershed

 No Data



Map Prepared by: Rick Moore  
Water Resources Center  
Minnesota State University, Mankato  
August 25, 2008