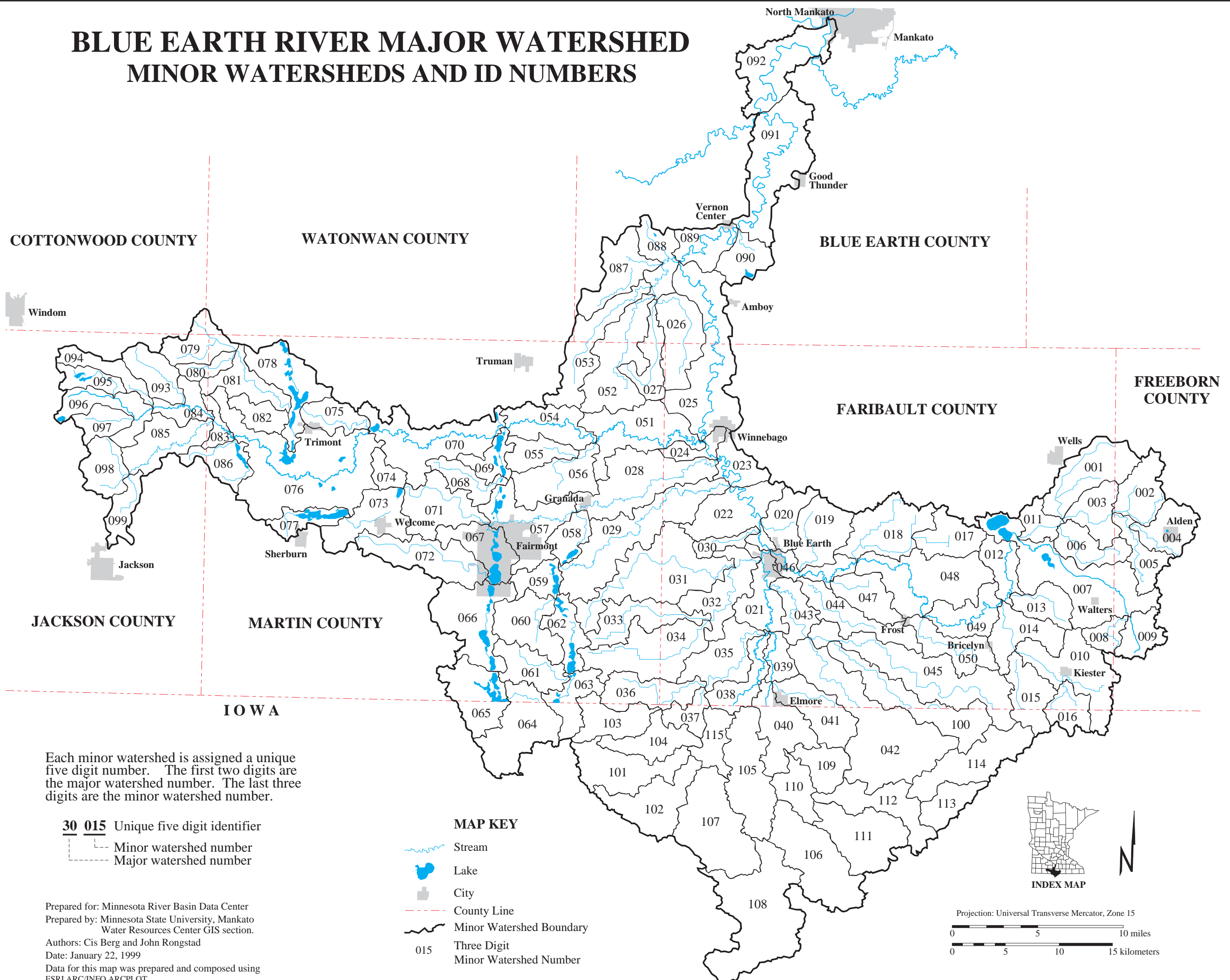








BLUE EARTH RIVER MAJOR WATERSHED

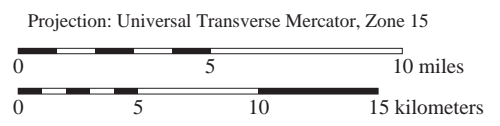
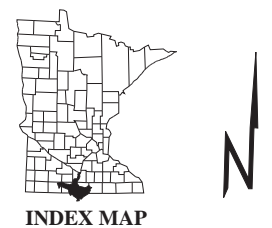
MINOR WATERSHEDS AND ID NUMBERS



Each minor watershed is assigned a unique five digit number. The first two digits are the major watershed number. The last three digits are the minor watershed number.

30 015 Unique five digit identifier
 --- Minor watershed number
 - - - Major watershed number

- MAP KEY**
-  Stream
 -  Lake
 -  City
 -  County Line
 -  Minor Watershed Boundary
 -  Three Digit Minor Watershed Number



Prepared for: Minnesota River Basin Data Center
 Prepared by: Minnesota State University, Mankato
 Water Resources Center GIS section.
 Authors: Cis Berg and John Rongstad
 Date: January 22, 1999
 Data for this map was prepared and composed using
 ESRI ARC/INFO ARCPLOT.