

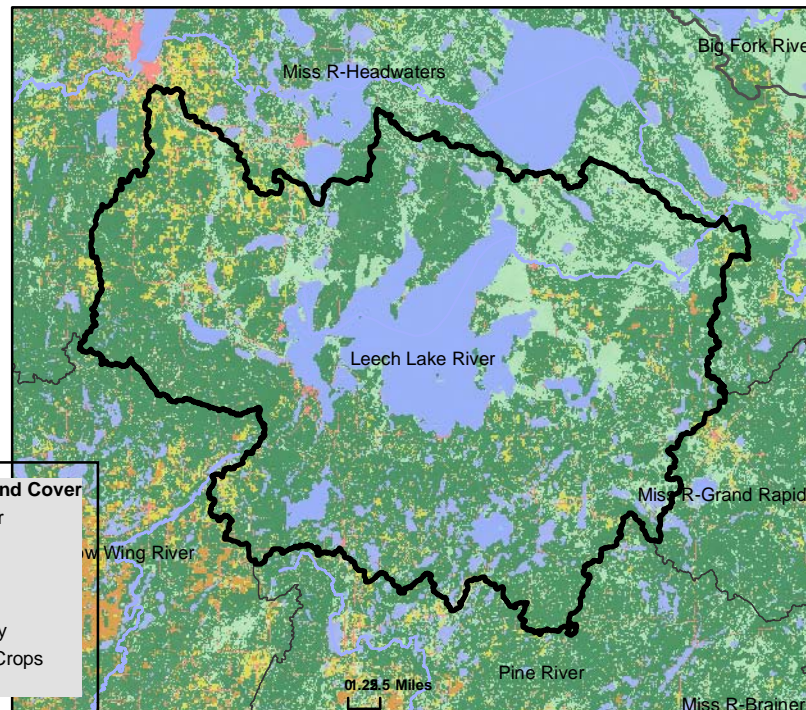
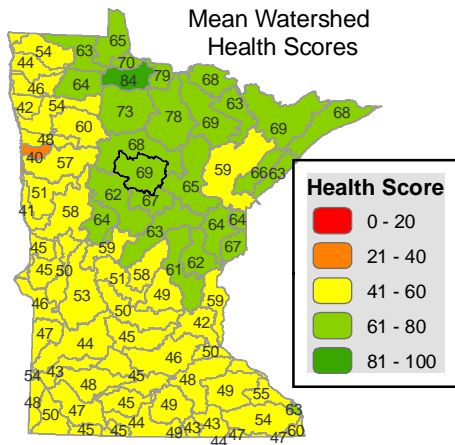
Leech Lake River

WATERSHED HEALTH ASSESSMENT SCORES

Mean (average) Health Score 69
Minimum Health Index Score 24
Minimum Health Index: Connectivity - Aquatic

Watershed Assessment Tool

http://www.dnr.state.mn.us/watershed_tool



Watershed Health Scores compare and rank various aspects of ecological health across Minnesota. Index values are based on a variety of data sources, calculations and scientific approaches. Each index is scored on a scale from 0 to 100, with 0 being the least desirable result or condition to 100 being the best existing condition or most desirable result. Major watershed scale rankings may mask the range of conditions that occur at more local scales. A high score may indicate the least impacted condition in Minnesota, not necessarily a healthy condition.

COMPONENT SCORES

HYDROLOGY	GEOMORPHOLOGY	BIOLOGY	CONNECTIVITY	WATER QUALITY
Mean (Ave.) 92 Minimum Index 76	Mean (Ave.) 62 Minimum Index 34	Mean (Ave.) 46 Minimum Index 30	Mean (Ave.) 54 Minimum Index 24	Mean (Ave.) 89 Minimum Index 76
INDEX SCORES Perennial Cover 96 Impervious Cover 98* Withdrawal 100* Storage 92 Flow Variability 76 Metric Sub-Scores Storage: Stream/Ditch Ratio 85 Surface storage 98	INDEX SCORES Soil Erosion Susceptibility 73 Groundwater Susceptibility 34 Climate Vulnerability 79	INDEX SCORES Terrestrial Habitat Quality 37 Stream Species 58 Species Richness 61 At-Risk Species Richness 30	INDEX SCORES Terrestrial Habitat Connectivity 41 Aquatic Connectivity 24 Riparian Connectivity 97 Metric Sub-Scores Aquatic Connectivity: Bridges/Culverts 29 Dams 18	INDEX SCORES Non-Point Source 91 Point Source 99* Assessments 76 Metric Sub-Scores Non-Point Source: Nutrient Application 100 Riparian Impervious 82

*These index values are influenced by very low scores associated with dense urban use of resources. This gives comparatively high scores for outstate Minnesota. Viewing input data is necessary to evaluate possible watershed scale concerns.